

## Making ear impressions

Please note the following specification for ear impression:

- The entire auricle should be filled in
- Impression should include the auditory canal beyond the second bend
- Complete impression of the concha

The surface of the ear impression must have a clearly recognizable structure and must be completely matte. The pores of the skin must be seen very clearly as well. Shiny areas with a clear edge are inaccuracies that have not been in contact with the skin.

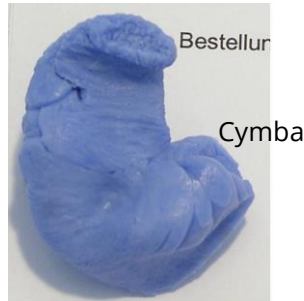
To ensure great sealing and perfect fit, the ear impression must be accurate. In case of inaccuracies in the sealing or holding area please repeat the procedure as a precaution.

The finished ear impression must not be edited or trimmed under any circumstances.

### Examples of faulty ear impressions



Air bubble, or non-formed areas of the cavum concha. These can always be recognized by the fact that these areas are shiny. As soon as the impression is in contact with the skin, the pores are visible.



The impression has many small as well as larger inaccuracies. This happens if the impression material is already curing during impression taking. In this case the auditory canal as well as the cymba is too short or not shown at all!



This ear impression was moulded past the tamponade. This causes an auditory canal which is much too short. The impression is also quite flat. This means that the transitions of the auricle to the outer ear are not shown well.

## Ordering ear moulds

You can send us the ear impressions as digital 3D-file in the format „.stl“ via e-mail. Please indicate the full name of the receiver of the earmoulds in the file name. In addition, please include the number of the Riedel quote and the full name of the receiver in the e-mail. If you do not have a Riedel quotation number, please provide us a PO number instead.

Please send us the file to the following e-mail address: [riedel.shop@riedel.net](mailto:riedel.shop@riedel.net)

You can also send us the ear moulds by post. Please always state the name of the person for which you are ordering the ear moulds in the delivery. The ear impressions, also labelled with the full name, must be sent to the following address:

Riedel Communications GmbH & Co KG  
InEar  
Uellendahler Str. 353  
42109 Wuppertal  
Germany

For further questions please contact [sales-motorsport@riedel.net](mailto:sales-motorsport@riedel.net).

\* \* \*