



Quick User Guide

Radios, Headsets, Intercom Headsets, Charger

16.09.2020

Heiko Johann | Technical & Operations Manager Motorsport

COMMUNICATION QUICK GUIDE

Radio, getting started

You have been assigned with a professional mobile radio (PMR)

- Familiarize yourself with the device
- Assure your Antenna is properly attached to the radio
- Assure your radio is set to the right channel/talk group and the key-pad is locked 'Menu'+'#'
- Assure your headset is properly connected to your radio
- Assure your Battery is properly charged and has enough battery power left to cover your next session

Feel free to ask the Riedel-team if you need any support or short training.



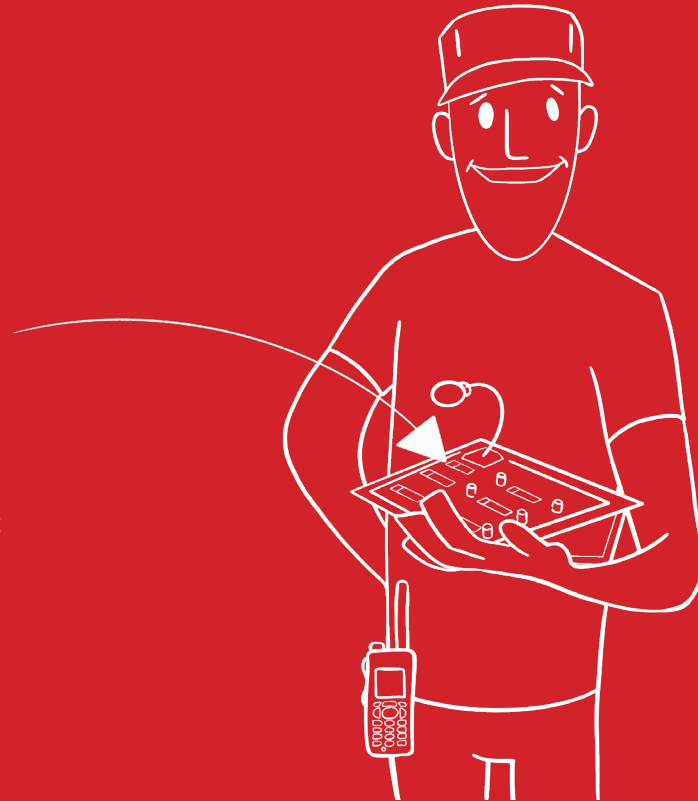
COMMUNICATION QUICK GUIDE

Intercom, getting started

You have been assigned with a key-panel

- Familiarize yourself with the device
- Assure your key-panel has all destinations you need to talk/listen to
- Assure no necessary source/destination are muted
- Assure your volume is set 'fit for purpose' (test)

Feel free to ask the Riedel-team if you need any support or short training.



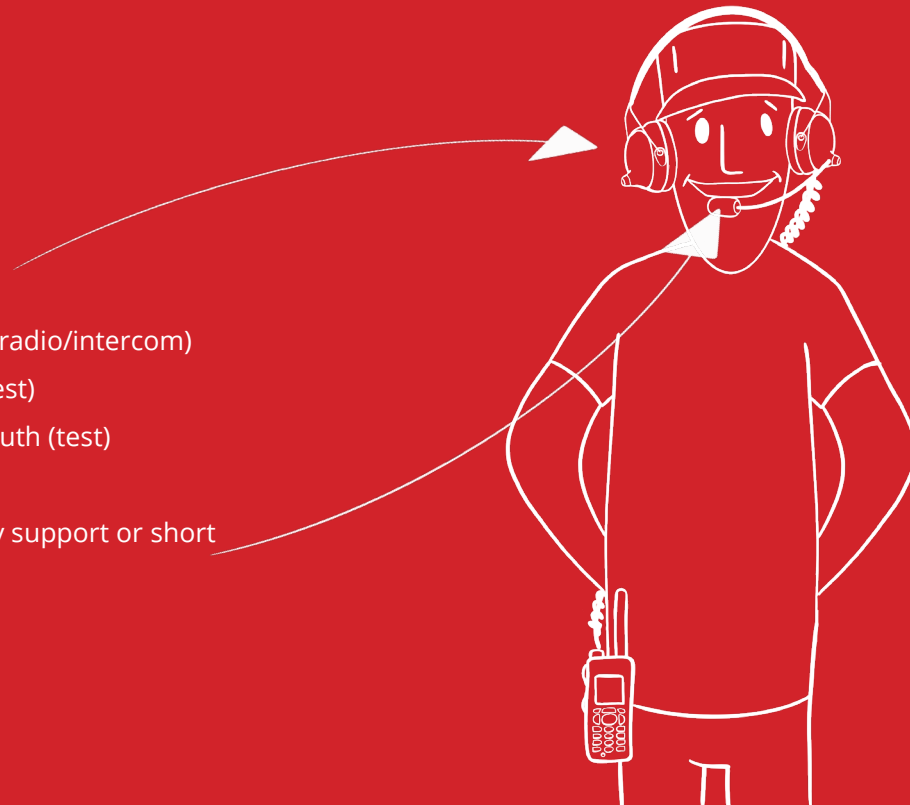
COMMUNICATION QUICK GUIDE

Headset, getting started

You have been assigned with a headset

- Familiarize yourself with the device
- Assure your headset has a windsock
- Assure your headset is properly connected (radio/intercom)
- Assure your volume is set 'fit for purpose' (test)
- Assure your microphone is close to your mouth (test)

Feel free to ask the Riedel-team if you need any support or short training.



RADIO (ONLY) - HEADSET



RADIO & INTERCOM HEADSET

Microphone with windsock
Microphone is close, pointing to the mouth



Loudspeaker with active noise cancelling

Turn on process:

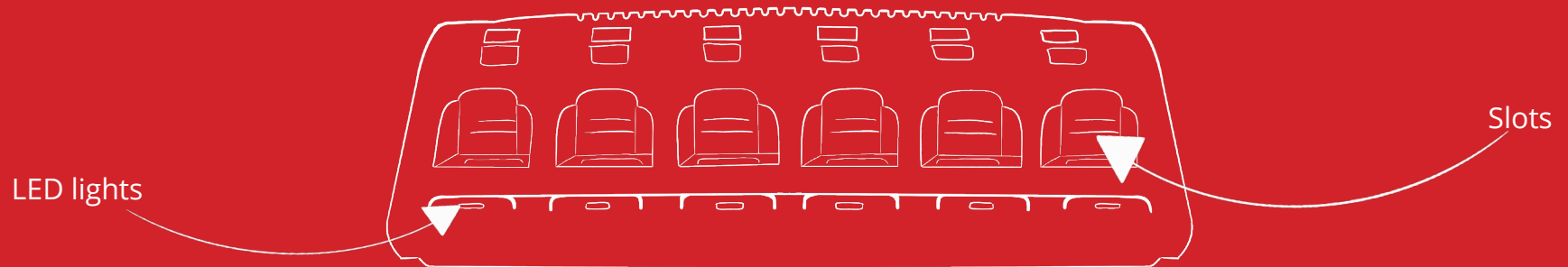
- Connect headset with radio(s)
- Turn on radio microphone side first then others if available
- Check beep tones (two times three tones in a row) on headset speakers for full headset battery capacity
- Connect with intercom system

INTERCOM HEADSET CHECKLIST

1. Charge headset battery
 - One day **before** race:
 - Connect the radio(s) with Intercom Headset via LEMO
 - Turn on radios and connect radios in charger bays
2. Turn on process
 - Connect headset with radio(s)
 - Turn on radio microphone side first then others if available
 - Check beep tones (two times three tones in a row) on headset speakers for full headset battery capacity
 - Connect with intercom

Feel free to ask the Riedel-team if you need any support or short training.

CHARGER



LED lights

- blinking red = connection issue, battery issue
- blinking green = 80%
- static green = 100%
- static red = charging

QUICK USER GUIDES

MTP850 S User Guide



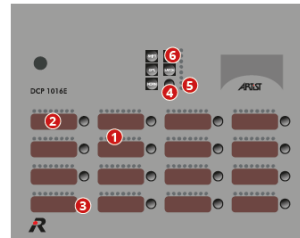
To change folder / talkgroup

- Press 'Optns'
- Select folder by pressing 'Select'
- Scroll to your chosen folder using the LEFT and RIGHT arrow keys
- Press 'Select' again

To change mode:

- Press 'Optns'
- Use DOWN arrow key to scroll to 'Direct Mode' or 'Trunked Mode'
- Press 'Select' again

DCP 1016/1008 Quick Start Guide



- 1 Talk button
- 2 Button Indication LED's
- 3 Button assigned Volume Knob

BASIC FUNCTIONS

The listening volume for each communication channel can be adjusted separately. The button assigned volume knobs **3** allow you to create your own mix. Turning the knob to the right the signal will get louder - to the left side to turn the volume down. The main volume will be adjusted with the volume knob **4** on the right side of the panel. The LED's **5** indicate the main volume level.

- 4 Main Volume Knob
- 5 Main Volume Indication LED's
- 6 Headset/Panel Mic Switch

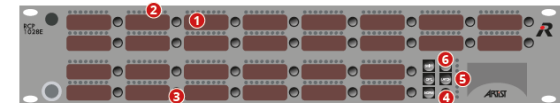
TALK

To activate a Talk on a communication channel you have to press the red display **1** with the text inside. The Talk path is only set for the time the button is pressed. During a Talk the indication LED's **2** are changing their colour.

PANEL MIC MODE/HEADSET MODE

The panel can work in mic/loudspeaker or in headset mode. If there is a headset connected to the panel the headset button must be switched to headset mode (indicated with the LED left from the button).

RCP 1028/1012 QUICK START GUIDE



- 1 Talk button
- 2 Button Indication LED's
- 3 Button assigned Volume Knob
- 4 Main Volume Knob
- 5 Main Volume Indication LED's
- 6 Headset/Panel Mic Switch

BASIC FUNCTIONS

The listening volume for each communication channel you have to adjust separately. The button assigned volume knobs **3** allow you to create your own mix. Turning the knob to the right the signal will get louder - to the left side to turn the volume down. The main volume will be adjusted with the volume knob **4** on the right side of the panel. The LED's **5** indicate the main volume level.

TALK

To activate a Talk on a communication channel you have to press the red display **1** with the text inside. The Talk path is only set for the time the button is pressed. During a Talk the indication LED's **2** are changing their colour.

PANEL MIC MODE/HEADSET MODE

The panel can work in mic/loudspeaker or in headset mode. If there is a headset connected to the panel the headset button must be switched to headset mode (indicated with the LED left from the button).



If you have any further questions, please let us know.