

Master Control Room

With this optional software package the individual “conference intercom systems” or “4-wire conference systems” found in many broadcast installations can be easily replaced and integrated into the main intercom system.

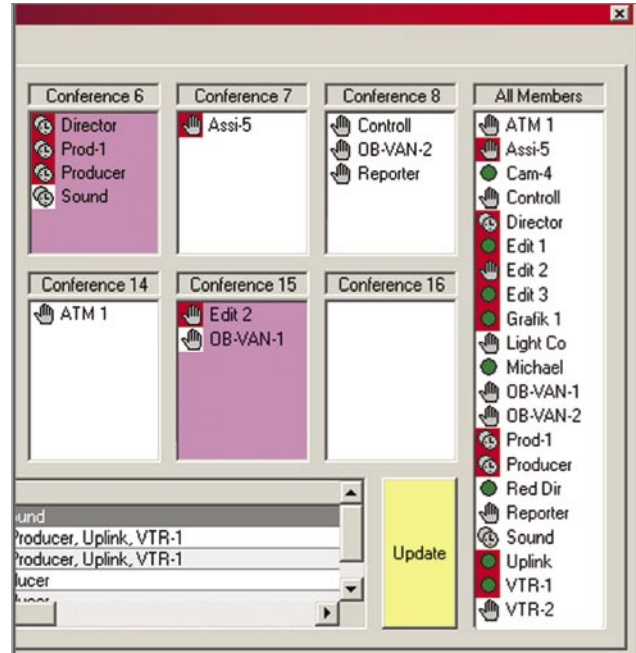
The GUI is typically operated by the master control room personal and designed for fast and ease handling.

Up to 16 conferences are shown on the screen and intercom ports (panels and 4-wire ports) can be dragged and dropped to the conferences.

An integrated scheduler allows for preprogramming the start of regular conferences, i.e. the daily editorial conference at 9:00 am. The time for an automatic dissolve can also be entered if required.

Powerful status information is provided by the GUI including upcoming automated conference members and vox indication per conference.

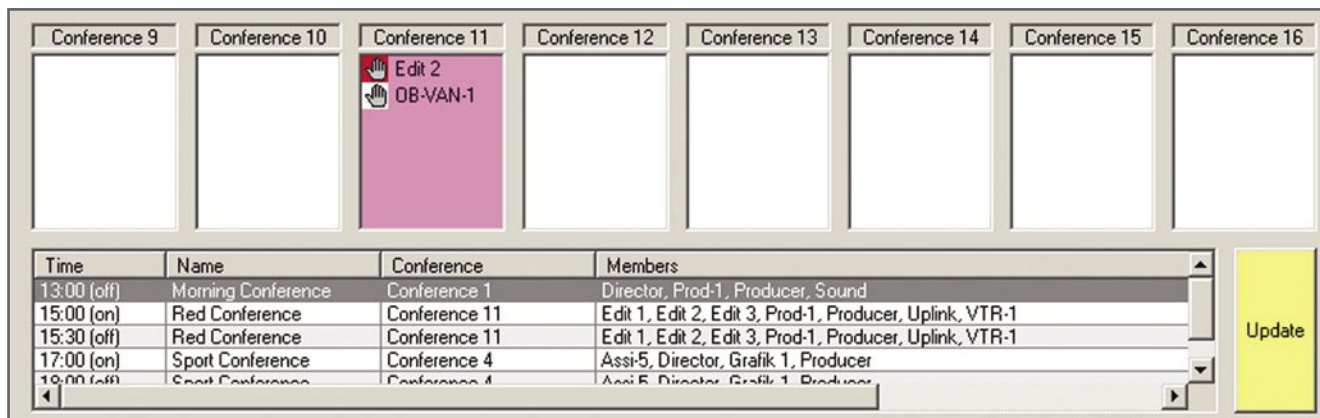
In parallel to the PC the system can also be operated from one or multiple control panels.



Director Software Screenshot

All status information is shared system wide so that the PC always shows the complete status information including changes made from the panels and vice versa.

Director Software Screenshot



Product specifications are subject to change without notice. This material is provided for information purposes only; Riedel assumes no liability related to its use. September 2004.