



Solutions for Theaters



CUSTOM REQUIREMENTS CALL FOR CUSTOM SOLUTIONS



Riedel Communications is a leading provider of intercom systems and real-time media networks for complex venues around the world. Among the most demanding environments for clear communications and high-quality signal distribution are theaters and concert halls. Systems in these ever-changing production settings require flexibility, reliability, and scalability – qualities that have been the trademarks of Riedel solutions for decades.

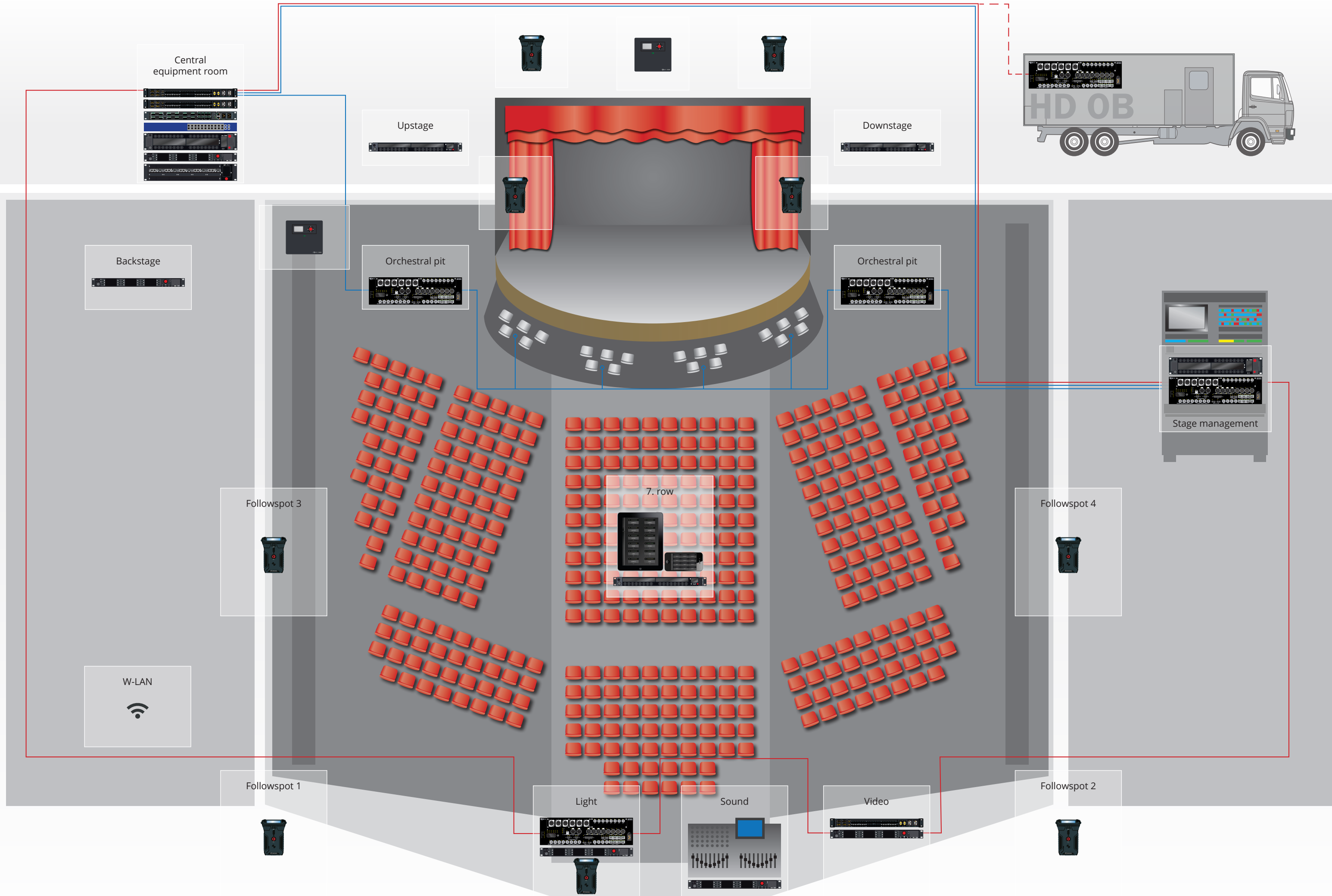
Whether network-based or open platform transport, digital matrix or partyline intercoms, digital audio networks, radio solutions, or fiber-based media networks – Riedel's range of products is ready for the requirements of any event venue or theater and offers individual solutions of the highest reliability. Radios, intercoms, instruments, mixing consoles, lights, stage management systems, audio distribution, video cameras, projectors, monitors, and computers can all be linked, routed, and managed through a single, intelligent real-time signal network. Riedel offers transparent, flexible, and powerful systems that will greatly reduce your installation and maintenance costs.

“The scalability of Riedel solutions is particularly important to us. It allows us to remain flexible in the long term, and to plan out future-proof and cost-effective systems that meet all production requirements.”

Karlheinz Fohlert, Head of AV, Theater Ulm

No matter how complex your installation may be, with Riedel solutions for theater and stage, your infrastructure can grow with your requirements. Our scalable and versatile systems offer unparalleled flexibility in setup and operation.

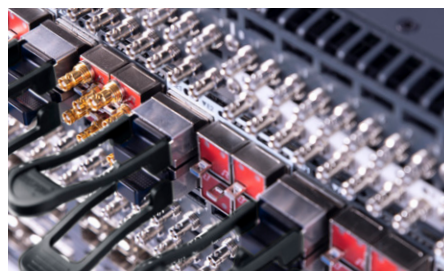
Do you need additional support for intercom or signal distribution? No problem! Just add one of many Riedel interfaces – whether as a permanent system expansion or a temporary rental solution – and you are ready to go on the spot!



PRODUCT LINES

MEDIORNET - THE REAL-TIME MEDIA NETWORK

- Unified network infrastructure for broadcast and entertainment
- Integration of all video, audio, data and communication signals
- Distributed routing, processing and multiviewing capabilities for SDI/TDM, hybrid or IP environments
- Intuitive real-time configuration



ARTIST - THE DIGITAL MATRIX INTERCOM

- Distributed masterless system architecture for reduced wiring and installation costs
- Up to 1,024 x 1,024 non-blocking ports per system
- Seamless integration of VoIP SIP PABX and mobile HF radio (conventional and TETRA)
- Easy and intuitive programming for reduced training and service
- Future-proof – scalable and expandable



BOLERO - THE WIRELESS INTERCOM

- Up to 10 belt packs per antenna; 100 antenna, 250 belt pack system capacity
- High-clarity voice codec, ADR technology for multipath mitigation
- 6-channel belt pack plus dedicated REPLY button
- Decentralized AES67 IP networked antennas
- Seamless integration into Riedel's Artist intercom matrix
- Two standalone network modes: Standalone Link & Standalone 2110 (AES67)



SMARTPANEL - THE MULTIFUNCTIONAL USER INTERFACE

- Multiple full-color multitouch displays, innovative hybrid-lever keys
- Easy adaptability to various workflows
- Ability to leverage apps for multifunctionality:
Intercom App, Control Panel App, Audio Monitoring App



RIEDEL STAGE SYSTEMS



Riedel Stage Systems are customizable theater solutions that harmonize the multifaceted components of theater production into a cohesive, manageable workflow. Combining state-of-the-art communication technologies with advanced stage management and rehearsal tools, their user-centric design empowers stage managers, directors, choreographers, technicians, and creative teams to work more efficiently, communicate more effectively, and focus on the artistry that brings stories to life. Your customized Riedel Stage System may include:

- **Artist & Bolero** intercom for unprecedented workflow flexibility
- **SmartPanels** uniting intercom, monitoring & control capabilities
- **MediorNet** video backbone for zero-latency signal distribution and Multiviewing with integrated stopwatch & timer
- **Riedel SimplyLive** solutions for recording & archiving rehearsals and choreographies
- **NSA** interfaces for 3rd party signal integration, e.g. for existing analogue paging systems
- 3rd party PTZ camera solutions & cue light systems



Riedel Communications GmbH & Co. KG
Uellendahler Str. 353 | 42109 Wuppertal | Germany
Phone +49 (0) 202 292-90 | info@riedel.net | www.riedel.net

#10/2024