

:update

#035



VDR 01

Graphics 01

VDR 02

Managed Technology

R||RIEDEL

Wuppertal

Montreal

Melbourne

NAB PRODUCT :update

BUILDING THE IP PRODUCTION FABRIC

At NAB 2026, the continued shift toward IP-based production is shaping how broadcast and live environments are designed and operated. Video, audio, and communications are increasingly treated as interconnected elements within a shared infrastructure rather than as separate systems. For Riedel, this evolution is less about introducing new categories and more about extending proven technologies into IP-based workflows. The focus is on integration, consistency, and operational confidence – bringing familiar approaches into networked environments without adding complexity.

This year's NAB portfolio reflects that direction, connecting monitoring, commentary, and audio connectivity into a more cohesive production environment and reinforcing a unified approach across core production workflows.

SIMPLIFYING MONITORING IN IP-BASED PRODUCTION



MEDIORNET HORIZON ST 2110 MULTIVIEWER APP

With the introduction of the MediOrNet Horizon ST 2110 MultiViewer App, Riedel extends one of the most essential production functions into IP-based environments: signal monitoring.

Multiviewing remains fundamental in broadcast, but in ST 2110 environments it must meet new expectations around interoperability, deterministic performance, and system integration. The Horizon MultiViewer addresses this by running as a software-defined application on the Horizon platform, eliminating the need for dedicated external multiviewer hardware.

This approach simplifies system design and allows monitoring to scale alongside processing resources while maintaining continuity with Riedel's established multiviewer concept. Engineers can transition from baseband and hybrid infrastructures into IP workflows without changing operational logic. At the same time, the solution delivers the performance required in live production environments, with support for SMPTE ST 2110 video, audio, and ancillary data, NMOS-based control, and high-density processing of up to 128 scalers and 16 multiviewer outputs within a single 1 RU unit.

The result is not a reinvention of multiviewing, but its natural evolution into IP-based production systems.

MEDIORNET FUSION ST 2110-TO-MONITOR GATEWAY BUNDLES

Alongside the ST 2110 MultiViewer App, Riedel also introduced the MediOrNet Fusion ST 2110-to-Monitor Gateway Bundles designed to simplify display connectivity in IP-based environments.

Built on the compact, software-defined Fusion platform, these gateways provide direct conversion of ST 2110 video, audio, and ancillary data to HDMI® and SDI monitors without requiring additional processing hardware. Available in single- and multi-channel configurations, they support HD, 3G, and UHD formats, flexible SFP-based I/O, and NMOS-based interoperability for seamless integration into IP workflows. With their compact footprint and options such as fanless operation, the Fusion gateways are designed for flexible deployment, including space-constrained and noise-sensitive environments.



COMMENTARY MEETS THE COMMUNICATIONS LAYER



COMMENTARY CONTROL APP

While video workflows continue their move into IP, commentary production has often remained fragmented. With the Commentary Control App for the 1200 Series Desktop SmartPanel, Riedel brings commentary directly into the communications ecosystem. By connecting natively to the Artist intercom system, the application integrates commentary workflows into the same logic and infrastructure used for production communications, eliminating parallel setups and reducing workflow complexity.

At the same time, the solution is designed for both engineers and on-air talent. Engineers benefit from remote configuration, monitoring, and support capabilities, while commentators interact with an adaptable user interface that can be tailored to their needs without becoming a distraction during live production. Running on the SmartPanel platform, the Commentary Control App reflects the shift toward multifunctional infrastructure. As the fifth SmartPanel application, it extends the platform beyond intercom into commentary, while also enabling the same device to operate as an intercom panel, audio monitoring interface, or control panel depending on the production.

With IP integration into Artist-1024, scalable user interface design, and support for efficient dual-commentator workflows with low latency, the solution aligns commentary with modern, network-based production environments.

AUDIO CONNECTIVITY WITHOUT FRICTION



STAGELINK NSA-008A

Completing the picture is the StageLink NSA-008A Network Streaming Adapter, a compact interface designed to bring audio signals cleanly into IP-based environments. Audio connectivity is often where complexity accumulates in production systems. The NSA-008A addresses this by providing a straightforward bridge between traditional audio sources and ST 2110 infrastructures.

With support for SMPTE ST 2110-30 and NMOS, the device integrates into standardized IP workflows while offering flexible, broadcast-quality I/O in a single unit. Microphones, line-level

signals, and AES3 sources can be connected and transported within the network without additional conversion layers.

At the same time, the NSA-008A supports third-party intercom workflows while enabling deeper, system-integrated control when used within Riedel environments such as Artist and Bolero. This reinforces the convergence of audio, communications, and networking within a unified production infrastructure, while maintaining a simple and reliable deployment model.

“In the end, the goal is not just to enable IP production, but to make it simple.”

Jake Dodson
Executive Director
Product Management
Riedel Communications

INTEGRATION AS THE NEW PRODUCTION STANDARD

Taken together, these developments highlight a clear direction. The future of production infrastructure is not defined by individual devices, but by how well systems work together.

With monitoring, commentary, and audio connectivity aligned within IP-based environments, Riedel's NAB 2026 portfolio moves toward a more connected and consistent production approach. Familiar workflows are preserved, but extended into IP-native architectures.

LEARN, PRODUCE, BROADCAST



UNIVERSITY OF BINGHAMTON STUDENTS RUN PRODUCTIONS WITH SIMPLYLIVE

■ When the action heats up in Binghamton University Athletics venues, it's about much more than traditional college sports. In its milestone year – celebrating its 80th anniversary and 25 years competing at the Division I level – Binghamton University, State University of New York, demonstrates how a student-driven production can evolve into a professional broadcast environment with the help of Riedel's SimplyLive RiMotion R12.





The progress is immediately evident. What began with the streaming of a handful of basketball games has grown into more than 120 live events annually, broadcast on ESPN and regional networks such as SNY and MSG. At the core of this growth is an almost entirely student-run production model: the intuitive SimplyLive interface enables a team of 60 to 70 students to take on nearly every production role independently.

What makes this especially remarkable is that most students start with no prior broadcast experience. Within a short time, they learn to deliver productions at a professional level. A key factor behind this success is SimplyLive itself – a technical solution that lowers the barrier to entry while supporting increasingly complex workflows. With the addition of a second replay position based on the RiMotion R12, Binghamton significantly enhanced its production capacity while giving students greater flexibility in their day-to-day work.

At the same time, the university has expanded not only its technical capabilities but also its sports portfolio. In addition to basketball, productions now include soccer, volleyball, wrestling, baseball, softball, and lacrosse. This is where the strength of the SimplyLive system becomes clear: its intuitive operation – whether via touchscreen, traditional controls, or a combination of both – allows students to quickly adapt to complex workflows and tailor them to their needs.

Another key advantage is the speed of highlight production. Operators can export clips while they are still being created, enabling them to be processed and shared on social media almost in real time. As a result, key moments reach fans just minutes after they happen on the field.

Behind the scenes, SimplyLive also delivers the flexibility required for a dynamic production environment. The system is reconfigured before nearly every game – from multi-camera basketball setups to leaner productions. Thanks to its browser-based interface, these adjustments

can be made quickly and efficiently, even during busy weeks with overlapping schedules. Supporting up to ten camera inputs and four playback channels, the R12 provides the capacity needed for a wide range of production scenarios while remaining accessible and easy to manage – essential in an environment with constantly changing teams.

The partnership between Binghamton University and Riedel Communications represents far more than a simple technical upgrade. It is a cornerstone in the continued development of a program that gives students hands-on experience at the highest level throughout their studies – while simultaneously redefining workflows in modern sports production.

“Tools like the SimplyLive system make that possible because they’re flexible enough for beginners while still giving us the capabilities we need as our broadcasts expand onto ESPN, SNY, and MSG.”

Jeremy Donovan
Video Production & Multimedia
Coordinator, Binghamton
University Athletics



UNIFIED CONTROL AND DISTRIBUTED INFRASTRUCTURE

CS LIVE CHOOSES RIEDEL FOR ON UNIFIED CONTROL AND DISTRIBUTED INFRASTRUCTURE ABOARD NEW OB VAN

■ As live production continues to evolve toward greater complexity and tighter turnaround times, production companies are rethinking not just their technology stacks, but the way operators interact with them. For Czech-based CS live, the answer lies in a more unified, software-driven approach. With its latest outside broadcast (OB) van, the company has implemented a fully integrated Riedel Communications ecosystem that brings together MediorNet media networking, Artist intercom with Bolero wireless, and the hi human interface control system into a single, cohesive production environment.

Built primarily for high-profile sports coverage – from national football and hockey leagues to international competitions and large-scale MMA events – the new OB van is designed to handle demanding, fast-paced productions where flexibility and reliability are critical. But beyond raw capability, the project reflects a broader strategic shift: moving away from siloed systems toward a more centralized operational model that simplifies control while preserving the flexibility of a distributed infrastructure.

At the center of this transformation is Riedel's hi control system, which introduces a unified control layer across the entire production environment. For CS live, this marks a clear departure from previous OB setups, where operators managed individual systems independently. With hi, multiple production elements – including routing, audio, switching,

and facility controls – can now be accessed and managed through a single interface. “It’s our first time working with a centralized control system in an OB van,” said Pavel Braun, CEO of CS live. “Now we can manage multiple systems together much more efficiently and adapt workflows as needed.”

This shift is not just about convenience; it fundamentally changes how production teams operate under pressure. By reducing the need to switch between disparate control surfaces and systems, operators can respond faster to changing production demands. The addition of tablet-based control further extends this flexibility, allowing key functions to be accessed beyond fixed panel locations – an increasingly valuable capability in dynamic OB environments.

Underpinning this control layer is MediorNet’s distributed signal architecture, which enables signal transport, processing, and monitoring directly within the network. Rather than relying on a centralized routing core, the system distributes functionality across multiple nodes, giving CS live the ability to scale and adapt its infrastructure depending on the production. At the same time, this architecture supports the company’s long-term transition strategy. While current workflows remain largely baseband, the system is designed to accommodate a gradual move toward IP-based production without requiring a complete overhaul.

This balance between current requirements and future readiness was a key driver behind the technology choice. CS live needed a solution that could deliver immediate operational benefits while also protecting its investment as production standards evolve. The result is an infrastructure that supports today’s workflows while keeping the door open for future developments.

The integration of multiple systems under the hi control layer also plays a crucial role in streamlining operations across the OB van. By bringing together equipment from different manufacturers – including audio consoles, production switchers, replay systems, and monitoring tools – into a unified control environment, the system reduces operational complexity and enables more consistent workflows. For system integrator Smart Informatics, ensuring that the engineering team could configure and adapt the system independently was a central objective. “The goal was to give the team more control over their own workflows, without relying on external support for every change,” said Tomas Vesely, Managing Director at Smart Informatics.

Communications, another critical component of live production, are handled by Riedel’s Artist intercom platform in combination with Bolero wireless. The integrated approach ensures reliable, flexible communication across all production roles, both inside the OB van and on location. Compared to standalone intercom solutions, the tight integration with the broader system architecture allows for more efficient coordination and easier scalability as production demands grow.

The project is also notable as the first deployment of Riedel’s hi control system in the Czech Republic, making it a reference installation for the region. Delivering such a project required close collaboration between CS live, Smart Informatics, and Riedel, particularly during the initial deployment phase. That partnership extended beyond installation, with ongoing support playing a key role in ensuring a smooth transition to the new workflow model.

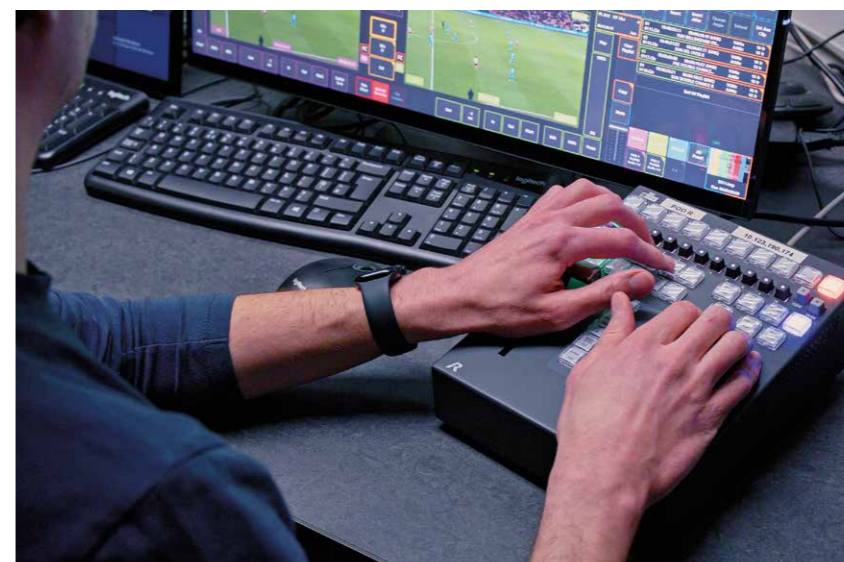
Ultimately, the new OB van represents more than a technical upgrade. By combining distributed signal infrastructure with centralized, user-friendly control and tightly integrated communications, CS live has created a production platform that aligns with the realities of modern live broadcasting. It enables faster decision-making, greater operational flexibility, and a clearer path toward future technologies – all within a single, cohesive system architecture.





A KICK-OFF FOR EFFICIENCY

IMG RELIES ON SIMPLYLIVE FOR ENGLISH FOOTBALL LEAGUE
PRODUCTION



■ When dozens of English Football League (EFL) matches take place on a single weekend, remote production becomes a strategic high-performance challenge. IMG rises to this demand from its broadcast center in Stockley Park, using Riedel's SimplyLive Production Suite - making it one of the most ambitious remote production setups in European football.

In total, IMG produces 50 to 60 matches per weekend, with more than half of them running through SimplyLive - efficiently, flexibly, and at scale.



Six camera feeds from Championship venues, four from League One, and two from League Two form the foundation of the setup. All of these signals are fed directly into the SimplyLive Production Suite, where operators manage live switching, replays, and key highlight moments.

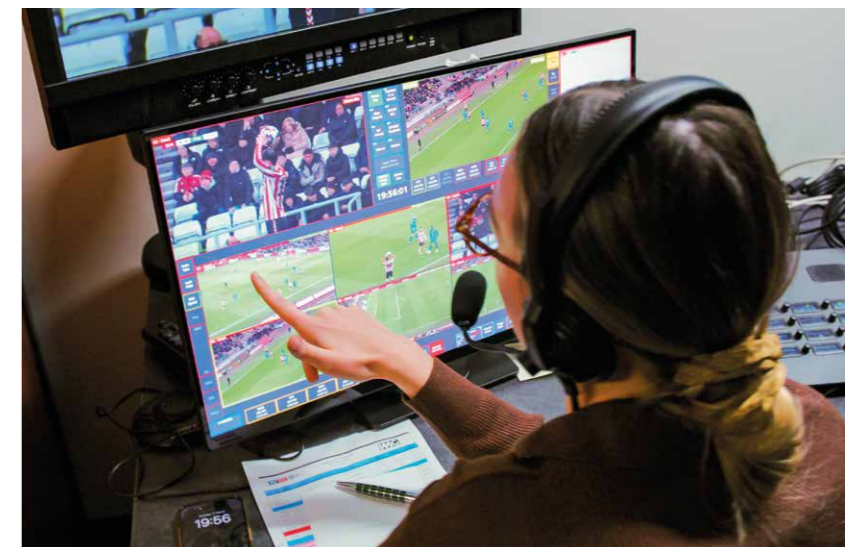
What sets the system apart is its end-to-end flexibility. Replay operators can review multiple camera angles simultaneously, identify decisive moments within seconds, and create valuable replays or highlight sequences almost instantly. This flexibility also extends to directors, who can tailor workflows individually – because with SimplyLive, the operator defines the workflow, not the system.

“The benefits of SimplyLive are the multiple outputs with separate graphics. Being able to service our clients and partners with different requirements so cost effective, is very valuable for us.”

Sarah Lochmore
Staff Director
IMG Studios

SimplyLive continues to deliver clear benefits even after the match has ended. All camera feeds remain immediately available, allowing IMG teams to respond quickly to requests from clubs, officials, and rights holders – whether for TV broadcasts or social media content. This not only speeds up turnaround times but also enhances the quality of the final output.

By implementing Riedel's SimplyLive Production Suite, IMG demonstrates how powerful software-based production environments must be designed today in order to achieve maximum efficiency – while establishing flexibility, scalability, and intuitive usability as key standards in modern remote production for professional football.



“SimplyLive is an intuitive software solution that enables more natural and efficient workflows. Especially when you are solely responsible for a broadcast, it provides a strong sense of security and control. Having Riedel as a support network behind us ensures stability and peace of mind, allowing us to fully focus on delivering high quality broadcasts.”

John Naylor
SimplyLive operator
IMG Studios



“Working with SimplyLive was a new experience and gave operators the chance to grow and develop.”

Brian Leonard
Head of Engineering
IMG Studios



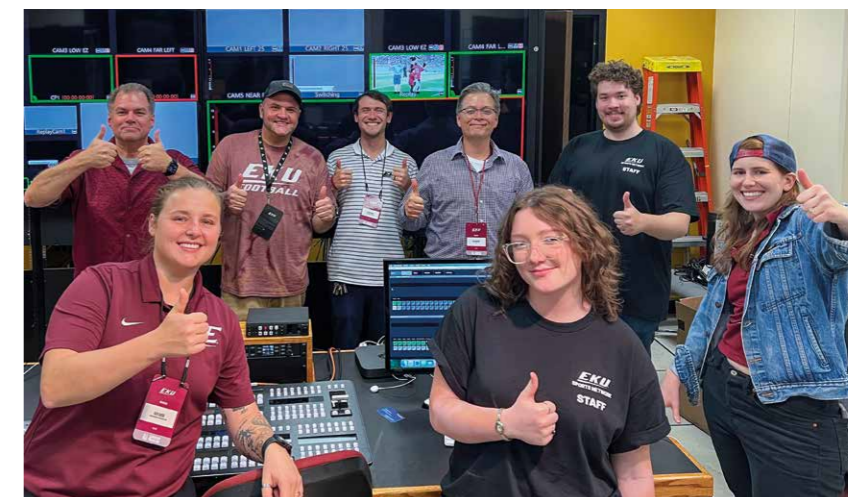
BUILT FOR TODAY'S SHOWS



AND TOMORROW'S TALENT

“When we first walked into EKU, they had an extensive fiber backbone that wasn't being fully utilized. By moving to an ST 2110 workflow with MediorNet Fusion with MuoN processing at the edge, they gained the flexibility to route anything anywhere without changing operators' workflows. The production team can shift between control rooms without remapping sources or patching cables, and by avoiding new fiber runs while bringing SDI sources into the network anywhere on campus, the transition became smoother, faster, and more cost-effective.”

Richie Murray
Bridge Digital



EKU UNIFIES CAMPUS PRODUCTION WITH RIEDEL-POWERED ST 2110 INFRASTRUCTURE

■ Eastern Kentucky University (EKU) has successfully modernized its production environment with a campus-wide IP-based infrastructure built on Riedel's MediorNet solutions. Designed and integrated by Bridge Digital, the deployment marks a shift from SDI to a SMPTE ST 2110 workflow, enabling flexible, scalable production across multiple venues. The new system connects key facilities including Alumni Coliseum, the Perkins Building, the Center for the Arts, and additional athletic venues via a 100-gigabit fiber network. This unified infrastructure supports a growing volume of live productions while streamlining operations and training, while also allowing any source to be accessed wherever it is needed across campus.



By adopting a hybrid ST 2110 approach, EKU preserved its existing SDI investments while introducing a more flexible and future-ready architecture. "Having a partner like Bridge was incredibly valuable – they took a lot of the weight off our shoulders and could recommend systems that worked together seamlessly," said Dwayne Bolin, Video Systems Engineer at EKU. "What we really wanted was consistency and flexibility without throwing away what we already had. By moving to a hybrid ST 2110 approach, we've kept our legacy gear while creating a unified system where everything works together. Users can walk into any room and feel comfortable right away—it's simplified training, reduced costs, and set us up for the future."

At the core of the system are COTS IP switches populated with Riedel MediorNet MuoN A processing SFPs, which handle gateway conversion, frame synchronization, and HD-SDI processing. This approach creates a highly adaptable foundation that integrates existing infrastructure while enabling efficient signal transport across the campus network.

Production is centered around two main hubs – Perkins and Alumni Coliseum – with all venues feeding into centralized control rooms over the existing fiber network. This eliminates the need for additional cabling while enabling more complex productions, including expanded multi-camera setups.

/// The beauty of FusioN is that it fuses the past with the present, allowing teams to bring legacy signals into a modern IP workflow."

Richie Murray
President
Bridge Digital



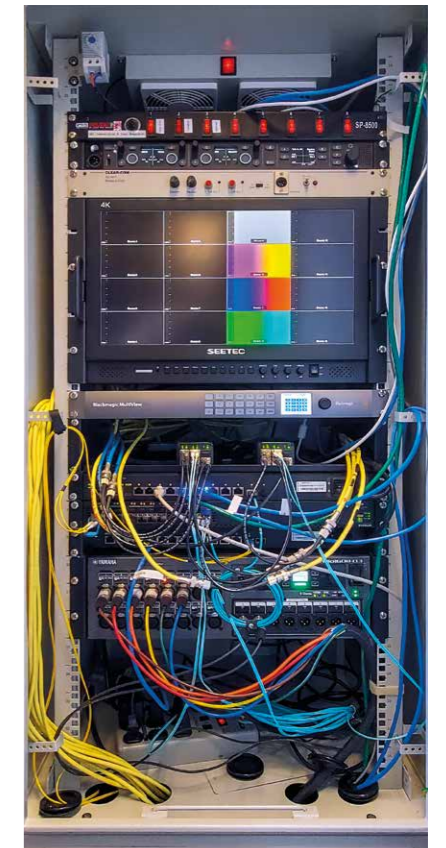
Riedel MediorNet FusioN frames deliver local I/O, multiviewing, and seamless integration of legacy equipment at each venue. The system's multicast structure and diagnostic capabilities simplify monitoring and operational management across the campus.

Communications are powered by Riedel's Bolero wireless intercom and PunQtum wired partyline system. Together, they provide reliable, flexible communication workflows across field and control room environments, supporting both professional staff and student crews.

The transition has already proven its value, with EKU successfully delivering live sports productions shortly after commissioning. The new infrastructure enhances production quality, reduces setup complexity, and creates a hands-on learning environment for students preparing for careers in media and live production. "Our students are our North Star," said Sarah Baker, Executive Director, Communications & Brand Management at EKU. "Every investment we make is about improving their experience and preparing them for the future, and this system does exactly that."

/// We use Bolero for field communications and PunQtum throughout our control rooms, and the combination has been incredibly powerful. The clarity, flexibility, and ease of use have made a huge difference in how our crews operate. Clearer communication, less troubleshooting, and more time to train students have directly increased the quality of our shows and better prepared them for the industry."

Katie Adkins
Assistant Director of
Broadcasting & Video,
EKU

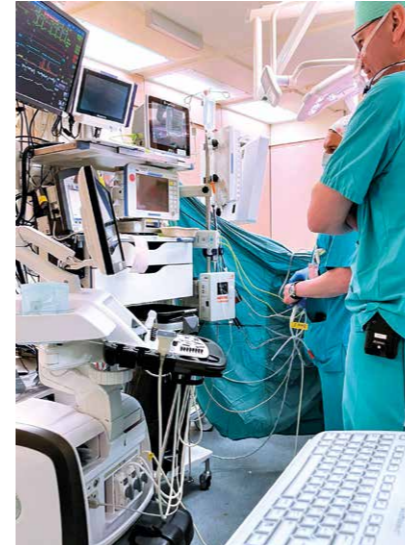


VISAR 2025



WHEN BROADCAST TECHNOLOGY REVOLUTIONIZES MEDICINE

■ When highly complex procedures take place in the operating room and every second counts, communication as well as image and signal transmission can make a significant difference. Today, audiovisual technologies are becoming increasingly relevant, opening new opportunities for collaboration and real-time insights in medical processes. This was demonstrated at the Vienna Interdisciplinary Symposium on Aortic Repair (VISAR) in late 2025, where an integrated Riedel setup enabled multiple surgeries to be transmitted live and facilitated interactive exchange with an international audience of medical experts. VISAR 2025 focused on aortic and heart valve surgeries, broadcast live from three parallel operating rooms at Vienna General Hospital. What made this particularly remarkable was that the transmission went far beyond a simple live stream – it enabled direct interaction between the surgical teams, moderators, and the audience.



Riedel's Managed Technology Division provided the complete technological infrastructure, consisting of an integrated ecosystem of Artist and Bolero intercom systems, MediorNet, and the SimplyLive Production Suite.

By using Bolero and Bolero S belt packs, medical staff were able to communicate directly with the congress hall during the procedures, answer questions, and explain their medical approach – without disrupting the surgical workflow. To make the audio accessible to the audience, intercom signals were fed into the congress hall's PA system via StageLink Network Stream Adapters.

To ensure stable and controlled communication under the specific conditions of a hospital environment, the locally separated Bolero networks of the individual operating rooms were interconnected and centrally managed via the Bolero Bridge. In addition, Riedel's Remote Operations Center (ROC) monitored the site-to-site connection, which was established via a secure IP link.

The live video production in the congress hall was realized using the SimplyLive Production Suite. This allowed flexible switching between operating rooms and the targeted replay of specific sequences – ideal for making complex surgical procedures easier to follow. The setup was complemented by MediorNet MicroN as a multiviewer solution, enabling parallel visualization of live surgical images and presentations.

With the technical implementation of the VISAR congress, Riedel not only set new standards for the event itself but also established a blueprint for the wider medical sector – opening new opportunities for healthcare institutions worldwide.

Healthcare Facilities: New Potential for Professional AV Solutions

The VISAR congress is just one example of the growing role of professional AV technology in healthcare. In specialized isolation units across the DACH region – such as at Charité Berlin – Riedel intercom solutions already support communication between physicians and clinical staff, even under challenging conditions involving protective suits and high ambient noise levels from ventilators. Intercom desktop panels additionally maintain connectivity with monitoring rooms, where communication with patients is possible via dedicated loudspeakers and room microphones.

Similar solutions are also used in high-security laboratories and in robotic medicine, for example at Gronau Hospital, where intercom technology supports coordination between robotic surgeons, anesthesiologists, and nursing staff.

“The technical requirements of VISAR go far beyond those of a traditional medical conference. Working with Riedel gave us the confidence that the congress could be delivered reliably in all its complexity.”

Dr. Martin Funovics
Member of the VISAR
Executive Committee



CLEAR COMMUNICATION BEHIND THE CURTAINS

RIEDEL'S INTERCOM SOLUTION FOR TEATRO ALLA SCALA

■ When the curtain rises at one of Italy's most prestigious theaters, the communication technology behind the scenes cannot be left to chance. Every detail must work together perfectly: from stage managers and lighting technicians to audio engineers and directors – all processes must be coordinated in real time. Last year, Riedel Communications worked with the Fondazione Teatro alla Scala to implement an integrated communications platform built around Bolero wireless intercom, and supplemented by StageLink NSA, RiFace, and PunQtum.

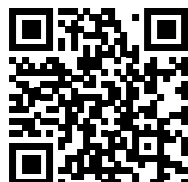
Before Bolero was introduced, Teatro alla Scala used a variety of different communication technologies, which made uniform integration virtually impossible. In addition, the architectural conditions with stairs, elevators, and acoustically sensitive areas such as the orchestra pit posed an additional challenge.

Thanks to the new infrastructure, the entire team is now seamlessly connected. RiFace integrates up to 45 UHF channels for the rigging crews, while NSA ensures collaboration with the streaming team's systems. PunQtum complements the setup by providing the necessary flexibility for shared communication. The system is already in use in all central areas of the building – from the stage to the backstage area. This allows the teams to communicate easily across departments.

Beyond enhancing collaboration, the new communications infrastructure delivers lasting operational value. Bolero's reliability minimizes maintenance and downtime, while its unified architecture reduces equipment overhead and operating costs. The intuitive interface lowers training requirements and accelerates workflows, enabling faster setup and smoother coordination across departments. Backed by the Riedel Care maintenance plan, the system ensures long-term performance and durability for one of the world's most prestigious opera houses.



For more information, please watch our video case study:



FROM CONFETTI TO CONNECTIVITY

RIEDEL AND HAIVISION COLLABORATE IN COLOGNE: EASY5G AT THE COLOGNE CARNIVAL

■ Wireless video transmission has long been considered a promising technology in broadcast production, offering great flexibility and new creative possibilities. However, technical limitations such as bandwidth constraints, limited compute power, and the need for efficient compression have long restricted its broader adoption in demanding live environments. Recent advances – particularly in Private 5G networks – are now opening the door to new workflows. At the start of the carnival season in Cologne, Riedel Communications and Haivision demonstrated what this new generation of wireless production can look like by combining their technologies into a powerful, flexible video solution directly from the source.

As part of this collaboration, Haivision products will be offered as part of Riedel's Managed Technology Services in the future, thereby diversifying the portfolio. Riedel's Private 5G solution, Easy5G, completes the integrated package, which is technically supported by the Managed Technology Team from planning to operation.

The entire system underwent its first practical test on November 11, 2025, during the WDR live broadcast of the session kickoff – and it was extremely successful. The entire Cologne Heumarkt was reliably covered by a Private 5G network via two Easy5G base stations. Two of the ten WDR cameras operated wirelessly with 5G transmitters from Haivision. One of these cameras was fixed in position and aimed at the audience, while the other moved around the dynamic event. The Haivision transmitters ensured reliable conversion of the SDI signals to IP and enabled latency-free transmission

to the Easy5G network and the Haivision Streamhub receivers in the WDR's OB van. The result of a robust and flexible camera workflow – implemented without traditional radio links via a private 5G network – was impressive.

But this partnership has much more potential than just wireless camera applications. Easy5G enables the parallel display of various production applications – all on the same infrastructure. For example, intercom applications can be controlled on a Virtual SmartPanel via a smartphone – using the same network that transmits video streams in parallel. This creates an integrated ecosystem that combines communication, video transmission, and other IP-based applications in a common infrastructure. Production companies benefit from reduced complexity, clear processes, and fewer interfaces.



Deploy Everywhere, Perform Anywhere: Applications Across Industries

Easy5G also opens up new possibilities in the event and festival sector, providing low-latency and stable connectivity even in high-density environments. Designed for rapid deployment, the Private 5G solution can be set up almost as easily as a WiFi network and scales flexibility by adding base stations or adjusting network parameters such as a uplink/downlink ratios or networking slicing. Whether for production intercom, wireless video, monitoring or temporary internet access, event organizers benefit from cost-efficient infrastructure that combines multiple actions on one platform.

Riedel's Easy5G can be deployed temporarily on festivals or multisport events like Racing Sports, but also as a fixed network in venues such as stadiums or broadcast compounds, as well as in industrial and corporate environments. With seamless integration into existing backbones, simple user provisioning via eSIM, and technologies like beamforming and advanced handover, the network ensures reliable connectivity even in demanding live environments.



BROADCAST SETS SAIL

RIEDEL AND MEDIA TAILOR ON BOARD THE "STAR OF THE SEAS"

■ With the Star of the Seas, Royal Caribbean launched one of the largest and most ambitious cruise ships in the world in summer 2025. The Icon-class vessel, measuring approximately 365 meters in length and spanning 20 decks, shares the title of the world's largest cruise ship with its sister ship, Icon of the Seas.



The ship was designed as a floating world of experiences, featuring various themed areas, restaurants, pool landscapes, and an extensive entertainment offering – ranging from daily live shows to large-scale multimedia productions. This includes more than 30 entertainment venues, such as theaters, live stages, diverse multimedia areas, as well as ice and water arenas. For on-site production, this means managing numerous formats and parallel requirements that must all function seamlessly at the same time.

Riedel and Media Tailor: Integration as a Team Effort

Royal Caribbean's requirements were clear from the outset: an infrastructure that does not merely connect broadcast, AV, and communication systems, but integrates them into a unified, user-friendly operational environment. This is where Riedel, in collaboration with Nordic media technology company Media Tailor, came into play. As part of their long-standing partnership, the Star of the Seas was equipped with a comprehensive broadcast, AV, and communications infrastructure. The backbone of the system is a distributed MediorNet network, which handles routing, signal processing, and multiviewing in a decentralized manner. This not only reduces space requirements and cabling but also increases operational reliability on the open sea.

hi human interface – One Control Solution – One Cruise Ship

Riedel's new control solution, hi human interface, also plays an essential role on board. In total, three hi servers form the foundation of the entire entertainment control system. Operation is handled via both hardware panels and software solutions on PCs and iPads, bringing full system control directly into control rooms and event spaces.

To ensure maximum flexibility and safety during shows – and to guarantee that video playback runs smoothly and all signals reach the correct destinations – hi connects the various system units on board. It integrates all MediorNet and Dante networks across the ship, routes audio signals, automatically converts embedded SDI audio signals, and provides unified video and audio sources.



“Creating a broadcast and AV environment of this scale requires a unified system that works seamlessly together. That is exactly what Riedel enables. Riedel's decentralized architecture allows operators to route video, audio, and data in real time with exceptional efficiency and redundancy across the entire ship – which is essential when operating in the middle of the ocean.”

Tuomas Niemelä
Business Director Shipbuilding
Media Tailor

Seamless Communication on Board

Not only audio and video, but also communication technology was fully integrated into a unified ecosystem. Riedel's Artist intercom system – consisting of an Artist-1024 matrix, more than 50 SmartPanels, 55 Bolero belt packs, and PunQtum partyline systems – connects all individual solutions into a single scalable ecosystem, enabling teams across different decks and venues to stay seamlessly connected.

With Star of the Seas, Riedel and Media Tailor once again highlight their role as technology partners for highly complex maritime projects, demonstrating how modern cruise ships are evolving into fully-fledged broadcast and entertainment platforms.

“Media Tailor and Riedel have once again delivered an integrated broadcast, communications, and AV infrastructure that provides unmatched flexibility and operational efficiency on our ship. Their expertise gives our teams the confidence to deliver spectacular live experiences to our guests every day, anywhere in the world.”

Christopher Vlassopoulos
Manager Newbuilding
Royal Caribbean

hi HUMAN INTERFACE



hi human interface is a browser-based, vendor-agnostic control system designed to simplify complex media infrastructures and transform how broadcast systems are configured, controlled

and operated. Its platform-independent interface enables operators to manage multiple devices simultaneously, offering flexibility, usability, simplicity, and scalability within just one single hardware solution.



**RHINE-RUHR
2025**

**FISU
WORLD
UNIVERSITY
GAMES
SUMMER**

**FROM THE RUHR
VALLEY TO THE
WHOLE WORLD**

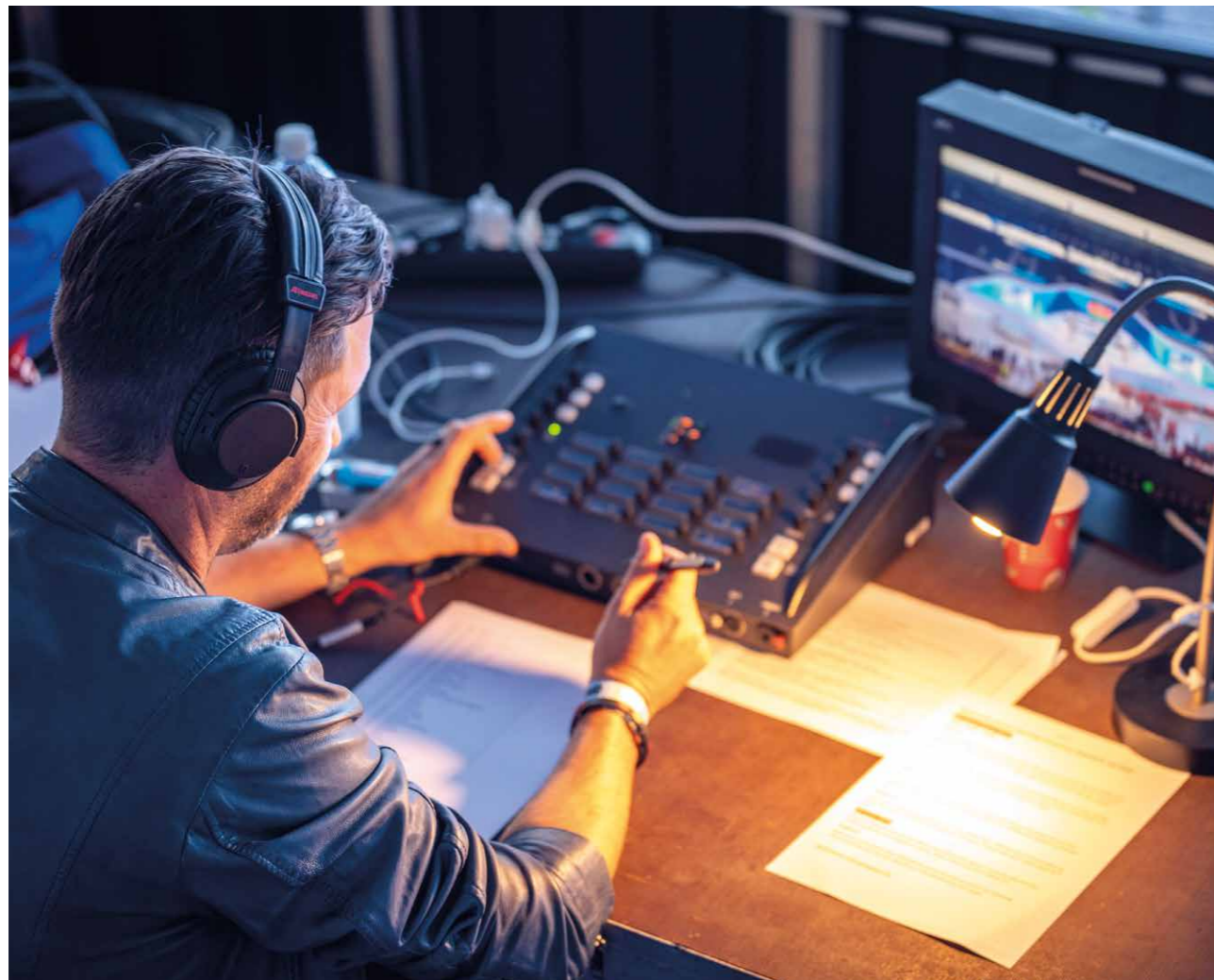
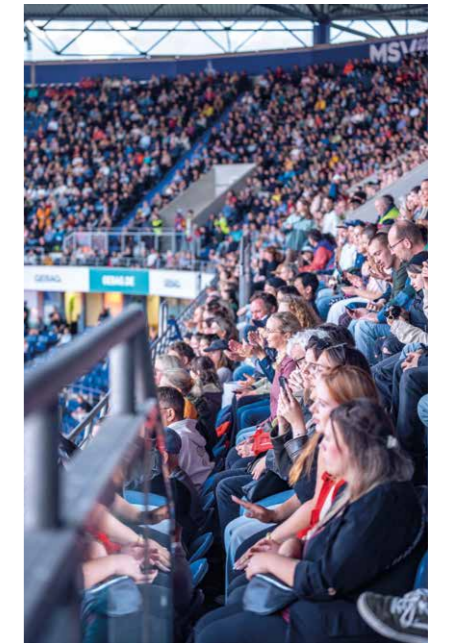
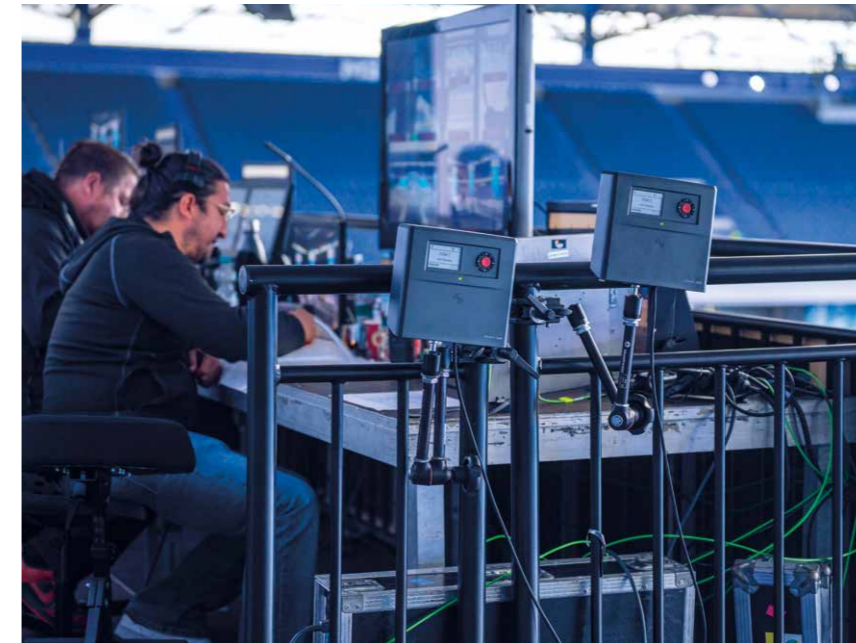
RIEDEL AT THE FISU GAMES 2025

Thousands of young international athletes, 18 different sports, 23 sports venues, and up to 22 productions running in parallel - it's not just athletic performance that counts here, but above all the infrastructure in the background. As an official partner of the FISU World University Games Rhein-Ruhr, Riedel Communications provided the entire communications and network infrastructure in the summer of 2025. From the starting signal of the opening ceremony to the closing ceremony, Riedel's Managed Technology Team was responsible for stable connections, clear communication, and central control of all processes at the International Broadcast Center (IBC) in Essen.



The competitions, which spanned the entire Ruhr region, required a highly scalable infrastructure. To this end, Riedel installed around 53 meters of multicore fiber optic cable, connecting all venues to the IBC in Essen. The next step was to set up a dedicated Network Operations Center (NOC) on site, where all systems could be monitored and controlled in real time.

Artist and Bolero Intercom, as well as MediorNet as the operational backbone, were at the heart of the entire infrastructure. Inside the arenas, communication ran via six networked Artist frames and approximately 40 Bolero belt packs. Outside, four additional MediorNet stage boxes were used. In addition, all audio signals were exchanged via a Dante network. For certain competitions, the Bolero S-RefComms system was also used for referee communication. The setup was complemented by Riedel's Juggler technology, which connected Tetra radios, Bolero, and Artist into an interoperable platform, ensuring seamless communication between the organization, security, and production teams.

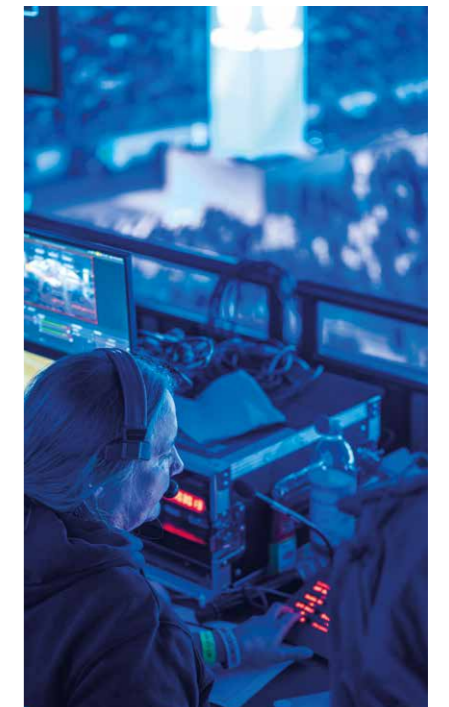


22 productions and one central goal

During this time, up to 22 parallel productions were realized, which were supervised by 13 OB trucks and around 470 specialists. Each individual sporting event was produced on site and the signals were transmitted via fiber optic cable to the IBC, where they were centrally checked, switched, and then distributed. There, they converged in a central master control area. MTI handled the contribution using Nimbra systems in technical containers at the venues – each with main feed, clean feed, backup, and return channel.

The IT infrastructure was also implemented by Riedel. A central network connected venues and the IBC and supported intercom systems, Internet access, and special applications. In addition, the team provided several hundred end devices, creating the technological basis for all operational processes.

With 53 kilometers of fiber-optic infrastructure spanning multiple venues and the International Broadcast Center, the Rhine-Ruhr 2025 FISU Games demonstrated how modern live production environments are built on powerful, interconnected networks. By bringing together communications, signal distribution, and IP-based workflows into a unified infrastructure, the event became more than a technical achievement. It created the foundation that connected athletes from around the world with millions of viewers – proving how advanced media networks enable global moments of sport to be shared in real time.



IMPRINT

Published by
 RIEDEL Communications GmbH
 Uellendahler Str. 353
 42109 Wuppertal
 Germany
 www.riedel.net
 Editorial Director: Julian Bülhoff
 Contact: julian.buelhoff@riedel.net

© 2026 RIEDEL Communications GmbH
 All rights reserved. Windows is a registered trademark of Microsoft Corporation. All trademarks are the property of their respective owners. Product specifications are subject to change without notice. This material is provided for information purposes only; RIEDEL assumes no liability related to its use. April 2026.

EXPANDING WITH PURPOSE

RIEDEL ADVANCES MANAGED TECHNOLOGY IN THE AMERICAS

Jan Schaffner
VP Managed Technologies Americas
Riedel Communications

Lutz Rathmann
CEO Managed Technology
Riedel Communications

■ Riedel Communications is accelerating the expansion of its Managed Technology activities in the Americas, marking a new phase in the company's long-term market development. As part of this effort, Jan Schaffner has been appointed Vice President, Managed Technology Americas, to lead the next phase of growth in the region.

The move also reflects a broader shift in customer demand. Across sports and live production, organizations are increasingly looking for flexible, service-based models that combine technology, workflows, and operational expertise. Riedel's Managed Technology Division addresses this by delivering integrated solutions that go beyond traditional equipment supply, combining products, services, and operational expertise into tailored solutions for specific workflows.

This expansion builds on groundwork laid over several years, during which Riedel's Managed Technology Division developed a structured go-to-market approach in the Americas, creating the foundation for a scalable and localized presence. To support this approach, Riedel has established a stronger local footprint in North America, including Managed Technology hubs in Los Angeles and Concord, N.C. These locations place teams, infrastructure, and resources closer to customers, particularly in key areas such as professional sports and motorsport.

A central element of the strategy is collaboration. Rather than competing with local partners and rental providers, Riedel focuses on highly specialized solutions and complex production environments that complement existing offerings. By combining Riedel products with proprietary technology, operational expertise, and dedicated service teams, the company aims to work alongside rental partners and system integrators to deliver large-scale productions.

Riedel's approach is clear: invest locally, work collaboratively, and build a lasting presence. Or, as Jan Schaffner put it: "We are here to stay."



Lutz Rathmann
CEO Managed Technology
Riedel Communications

INTERVIEW WITH LUTZ AND JAN

Jan joined Riedel in 2018 and has played a key role in developing the company's Managed Technology activities in the Americas. In his new role, he will lead the continued growth of the Managed Technology Division in the Americas, focusing on sustainable expansion, local market alignment, and operational excellence. We sat down with him and Lutz Rathmann, CEO Managed Technology, to talk about how Riedel is approaching the U.S. market, where the biggest opportunities lie, and how the company is building a long-term presence in the region.

Why is now the right time to expand Managed Technology in the Americas?

Lutz: We're seeing a clear shift in how customers approach technology. In the past, especially in the U.S., ownership was the dominant model. Today, there is much more openness toward service-based approaches where customers are looking for outcomes rather than infrastructure. At the same time, production environments have become significantly more complex. Workflows are more interconnected, technologies evolve faster, and the pressure to innovate is higher. That combination creates demand for integrated service models — and that's exactly where Managed Technology comes in.

What makes the Americas market unique?

Jan: The U.S. market in particular operates very differently from other regions. There are distinct workflows, expectations, and ways of working. That's why we deliberately chose not to take a copy-and-paste approach. We spent time understanding how the market functions and where we can add value. It's about building solutions that truly fit how customers operate — not transferring a model from somewhere else.

How do you balance global strategy with local execution?

Lutz: We don't apply a one-size-fits-all model. What matters is combining global expertise with strong local execution. And that local element is critical: you need people on the ground who understand both the technology and how business is done in the region. That's what allows us to connect our global capabilities with local requirements.

How do Riedel's Product Division and Managed Technology play together in this model?

Lutz: For us, it's about giving customers flexibility. You can think of it as a spectrum — from owning technology to consuming it as a fully managed service. What makes this powerful is the combination. We bring products, services, and operational expertise together and tailor that mix to the specific use case. That's something customers increasingly value, because their requirements are not static.

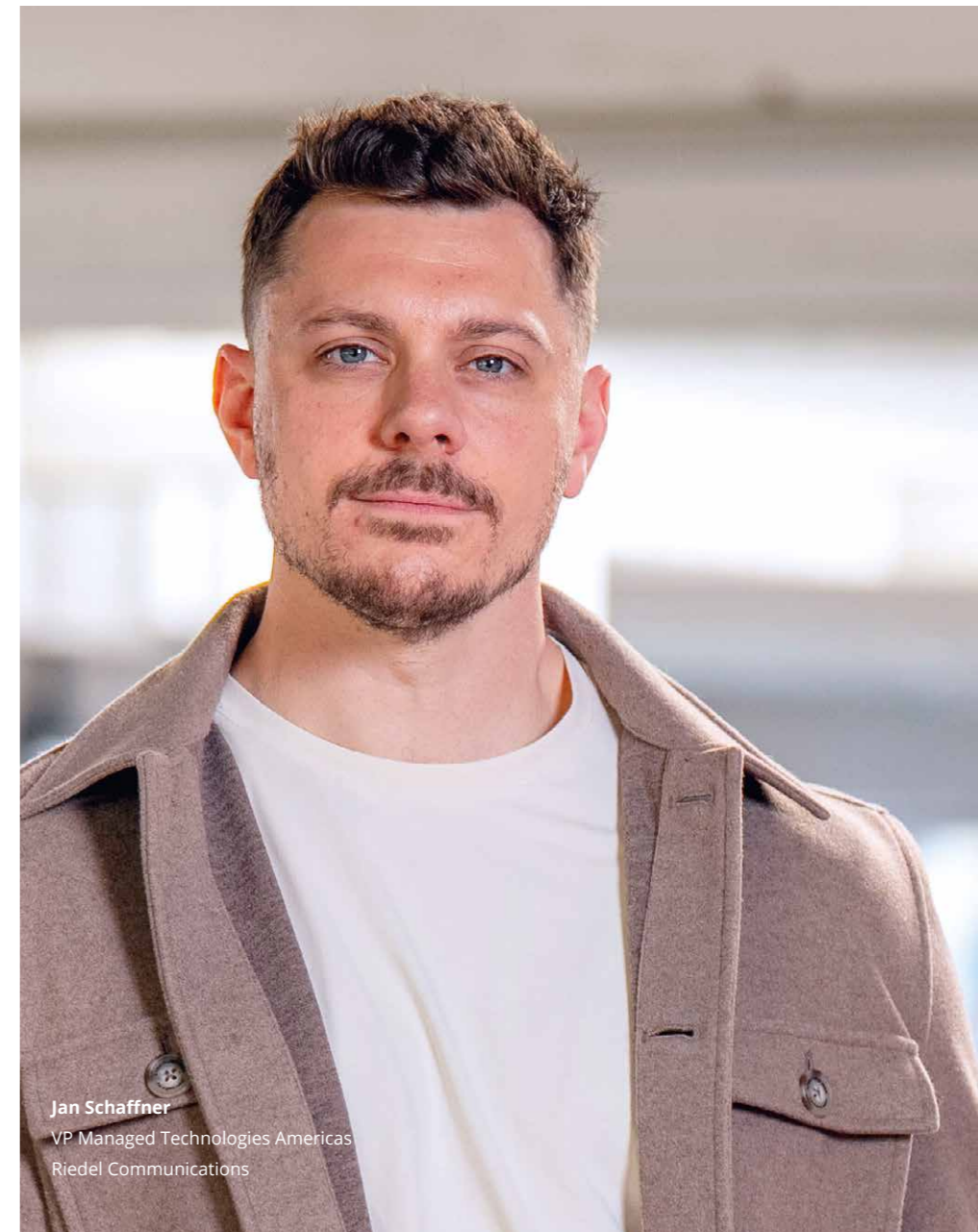
Where do you currently see the biggest opportunities?

Jan: Motorsport is a very strong growth area. It's a highly workflow-driven environment where communication is critical — between teams, officials, and production. We're bringing experience from international racing series and combining that with local partnerships to help evolve those workflows. At the same time, we see strong demand across professional sports, especially where leagues are looking to improve communication and operational efficiency.

How are you building the organization to support this growth?

Jan: Very deliberately. We're growing based on demand and focusing on building the right capabilities where they are needed — from engineering and project management to on-site expertise. It's not about scaling as fast as possible, but about building something sustainable.

Lutz: And that includes having the right people. The limiting factor in this kind of business is often not technology... it's expertise. So we focus on building strong teams that can actually deliver what we promise.



Jan Schaffner
VP Managed Technologies Americas
Riedel Communications

What role do partners play as you expand further?

Jan: Partners remain a fundamental part of the ecosystem. What's important is that we are not entering the market to take business away from them. Instead, we focus on areas where we can add value — particularly in the most complex, integrated environments.

What defines success for you in the Americas over the next few years?

Jan: Building a sustainable business with strong local teams and long-term customer relationships.

Lutz: And becoming a trusted, local player — not just operating in the market, but being part of it. Once we achieve that, growth will follow naturally.



A VIEW THAT CHANGES THE GAME

REFCAM IN ACTION

■ In top-level sports, seconds often decide between victory and defeat. For referees in a wide variety of sports, this means making lightning-fast and fair decisions – all under the watchful eyes of hundreds of fans, athletes, and coaches. But while players' actions are already filmed from a wide variety of camera angles and analyzed in the next step, the referee's perspective has long remained invisible. This is where the Riedel RefCam comes in, offering a completely new perspective on the game – directly from the referee's eyes.



“Working with scientific partners is essential to advancing officiating standards. Innovative technology projects like RefCam can play a key role in quality assurance while also providing fresh insights for referee education and training.”

Carsten Straube
B and C Squad
Referee Manager
DBB

Weighing only 14 grams, the camera unit is discreetly integrated into the referee's headset and delivers high-resolution images in 1080p or 720p at up to 59.7 Hz. A wide-angle lens, automatic exposure adjustment, and electronic image stabilization ensure stable recordings, even in fast-paced sporting events. What makes it special is that the camera is virtually imperceptible to the referee, giving the dynamic nature of the sport the flexibility it needs.

RefCam is available in two versions: RefCam Live for real-time transmission in HD quality and RefCam Record for local recording in the highest quality. The camera can be easily integrated with other Riedel solutions such as Bolero, Easy5G, and MediorNet systems and can be combined with various headset types to make intercom communication and video transmission compatible.

Riedel RefCam makes the referee's perspective more present than ever before in sports history and an integral part of modern sports production, opening new doors in coaching, analysis, and storytelling in sports.



Exciting new Perspectives in Professional Basketball and Handball

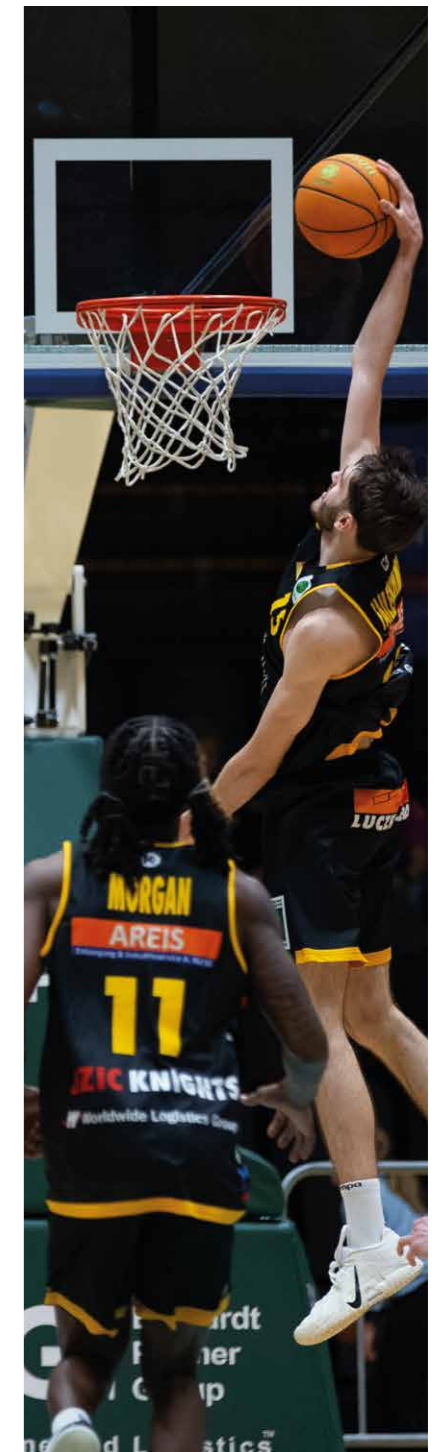
Following the strong success of RefCam since 2024 in football – including deployments across top-tier leagues and major international club competitions – the technology is now expanding into additional sports and high-profile leagues.

Beyond enhancing the spectator experience, RefCam also opens up new perspectives in the training and education of referees. In cooperation with the German Basketball Federation (DBB) and the German Sport University Cologne, the system was tested for the first time in the 2nd Basketball Bundesliga. During the game between EPG Baskets Koblenz and Bozic Estriche Knights Kirchheim on December 28, RefCam was deployed as part of a scientific research project. The aim of this initiative is to develop a comprehensive training concept to improve the decision-making of basketball referees. Audio and video material allow game situations to be analyzed from the perspective of the referees for the first time. RefCam thus offers referee coaches a valuable tool for better understanding and optimizing workflows and decision-making processes.

RefCam is also already being used in international top-level sports. In Herning, Denmark, it was used during the final weekend of the EHF EURO 2026 Men's Championship in the live broadcast of the semifinal and medal games. The camera signals were transmitted in real time to TV productions worldwide via Riedel's Easy5G Private 5G network. In addition to reliable live broadcasting, the recordings provided deeper insight into the communication between referees and players. Fans benefited from a new perspective on the game – closer than ever before.

“The RefCam brings fans closer to the action than ever before. Its introduction underlines the EHF's broader mission to embrace state-of-the-art broadcast technology and continuously enhance the spectator experience, both in the arena and for millions of viewers worldwide.”

Martin Hausleitner
Secretary General
EHF





ADVANCING US MOTORSPORT

**STRATEGIC PARTNERSHIP
BETWEEN RACING
ELECTRONICS AND
RIEDEL COMMUNICATIONS**



■ **Speed, precision, and seamless communication at the racetrack – these are the foundations of modern motorsports. Racing Electronics, a leading provider of communications equipment in the United States, and Riedel Communications entered a strategic partnership at the end of last year to take these capabilities further.**

The goal of this collaboration is to set new benchmarks in the American motorsport industry while enhancing safety, efficiency, and the foundation for peak performance for race control, teams, drivers, and fans alike.

What makes this partnership unique is the combination of two complementary strengths: On one side, Racing Electronics contributes decades of experience in US motorsports. For generations, the company has been a trusted presence at racetracks across North America, supplying racing series and teams with specialized radio communication equipment and accessories.

On the other side, Riedel brings extensive international expertise in the development and deployment of advanced intercom and signal distribution systems – including the flexible and powerful Artist-1024 infrastructure and the wireless Bolero Intercom system. Together, this creates a comprehensive solutions portfolio that unites cutting-edge technology with deep market knowledge.

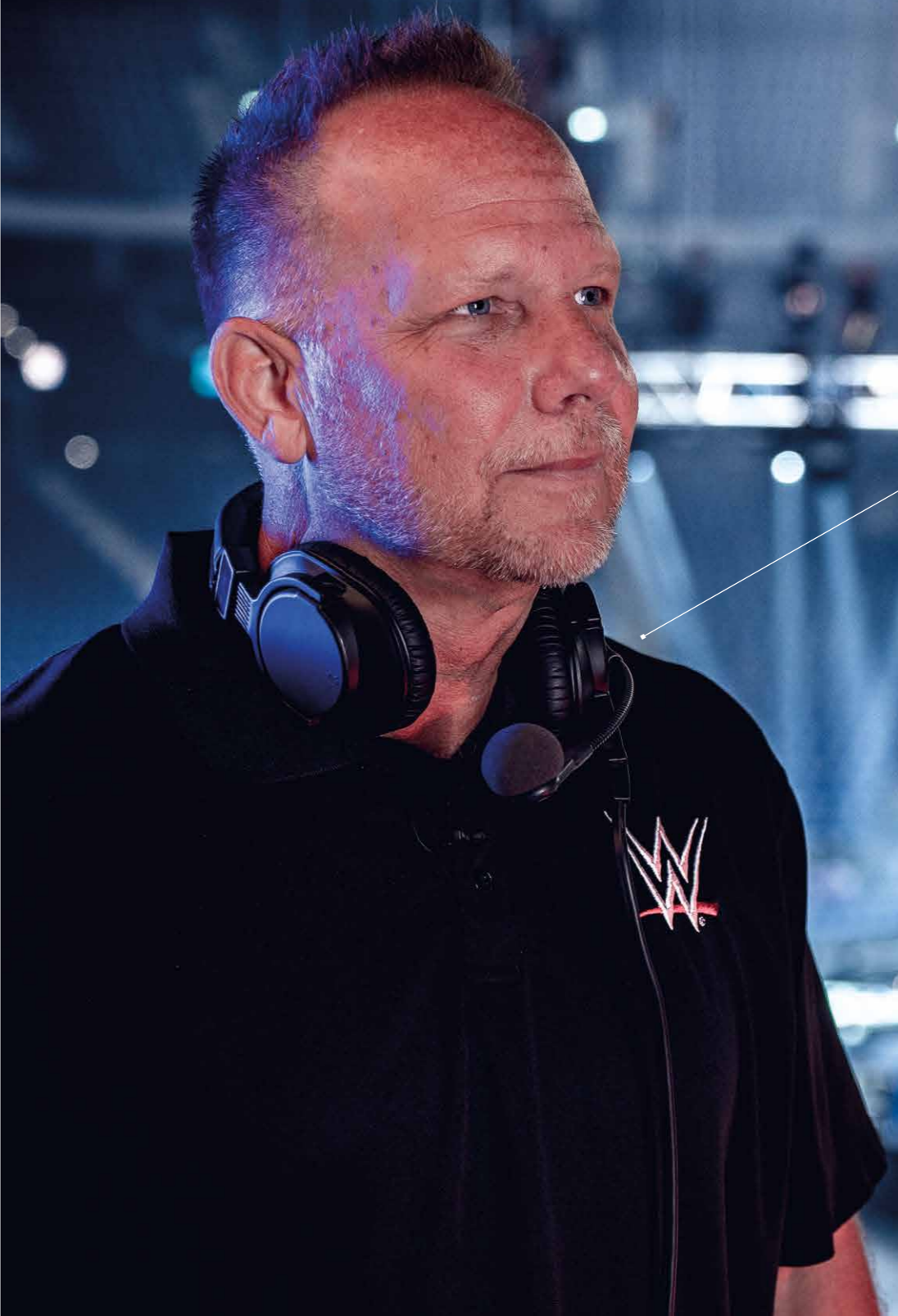
As part of the newly formed partnership, Racing Electronics' existing facilities will be further enhanced with the establishment of new motorsport competence centers by Riedel. These centers will consolidate both technical and human resources to support racing events not only across the United States but internationally in the future.

By combining Riedel's intercom and signal distribution systems with Racing Electronics' in-depth market expertise, the partnership delivers reliable communication systems that ensure clear and uninterrupted connectivity. In addition, the collaboration offers a broad range of customer support services – from custom-molded earpieces and fully equipped helmet kits to full-service trackside rentals. This allows for precise alignment with the specific needs of teams and customers.

Beyond technological innovation, sustainability is a key priority for both companies. The establishment of a motorsport remote operations center in Concord, North Carolina, represents a major step forward. By enabling remote workflows and faster response times, the center significantly reduces the carbon footprint of joint operations.

Through this strategic partnership, Riedel and Racing Electronics are creating a future-ready, interactive platform for the evolution of motorsport across the United States.

I'M AN ARTIST



JOHN SCHUELER
DIRECTOR - EVENT TECHNICAL OPERATIONS
www.wwe.com

Artist and Bolero have been game changers for the whole broadcast industry. The voice quality and the coverage are key for us. That's why we switched to Riedel years ago.

We are using Artist-1024 to provide all of our comms to guarantee clear communication between all departments"

ARTIST INTERCOM
Professional and reliable live communications. Seamless integration of Riedel's SmartPanel and Bolero wireless intercom. Easily scaling from 16 to 1024 ports with flexible licensing.

Become an ARTIST
www.riedel.net
[#iamanartist](https://twitter.com/iamanartist)

Published by

**BROADCAST
THE BRIDGE**
original independant content

Vendor Content: by Riedel
Broadcast Standards - Remote Contribution Network Design

EAST SHORE SOUND ON BUILDING HIGH-BANDWIDTH NETWORKS WITH MEDIORNET

By Drew Martin, Head of Video Product Management - Riedel Communications.

■ Riedel's MediorNet is a distributed TDM-based mesh network that has the potential to be all things to all people, but according to East Shore Sound President Bill Saltzer, its decentralized approach requires some fresh thinking.

As the broadcast and live production industry navigates the gradual yet inevitable transition from SDI to IP, hybrid solutions have emerged as a smart convergence of traditional and modern workflows. These solutions bridge baseband systems with cutting-edge IP technologies, enabling operators to leverage the best of both worlds. At Riedel Communications, our mission is to simplify this migration and empower our clients to meet the demands of modern production environments without unnecessary disruption. One of the most compelling examples of this approach is Videlio Events recent deployment of our award-winning MediorNet HorizoN platform, which enabled them to build temporary hybrid environments for back-to-back productions across France.

For East Shore Sound President Bill Saltzer, every week at work is different. Founded in 2001 in Maryland in the USA, East Shore Sound has built an enviable reputation for the design and management of large-scale, temporary broadcast networks.

As the go-to company to design, install and manage on-site networks at live broadcast events like the National Spelling Bee and PBS's annual A Capitol Fourth concert, Saltzer faces a different challenge every single week. His job is not only having to meet the specific needs of each individual client, but to streamline each network infrastructure to ensure a smooth and efficient build up, while delivering enough flexibility to adapt to changing requirements on the fly.

Having bought into the company's Artist G2 Intercom system in 2012, Saltzer has been working alongside Riedel for almost 15 years, and as the company developed its staging business to include the rental of video monitors at live televised events, it needed a solution to get signals from the production truck to the displays. Finding that traditional signal hardware fell short of what they were looking for, the answer lay with Riedel's MediorNet MicroN series, a decentralized mesh network which Saltzer describes as seeming like "a next generation solution for the problem we were trying to solve."

"We started out with four MicroN units and added a couple of Compact Pros," says Saltzer. "Since then we have steadily expanded our inventory to accommodate the needs of our clients and we currently have 23 x MicroN frames, five MicroN UHD units, and 11 x Compact Pros.

"Once Riedel made the fiber density a selling point, we really jumped on board. MediorNet's biggest advantage lies in its approach to fiber management, and it is all about building bandwidth. The system's secret sauce is that rather than using traditional point-to-point connections that send a program video down one strand and a prompter video feed down another, MediorNet multiplexes the signals and the system automatically allocates available bandwidth to move signals where needed, which simplifies planning and operation."

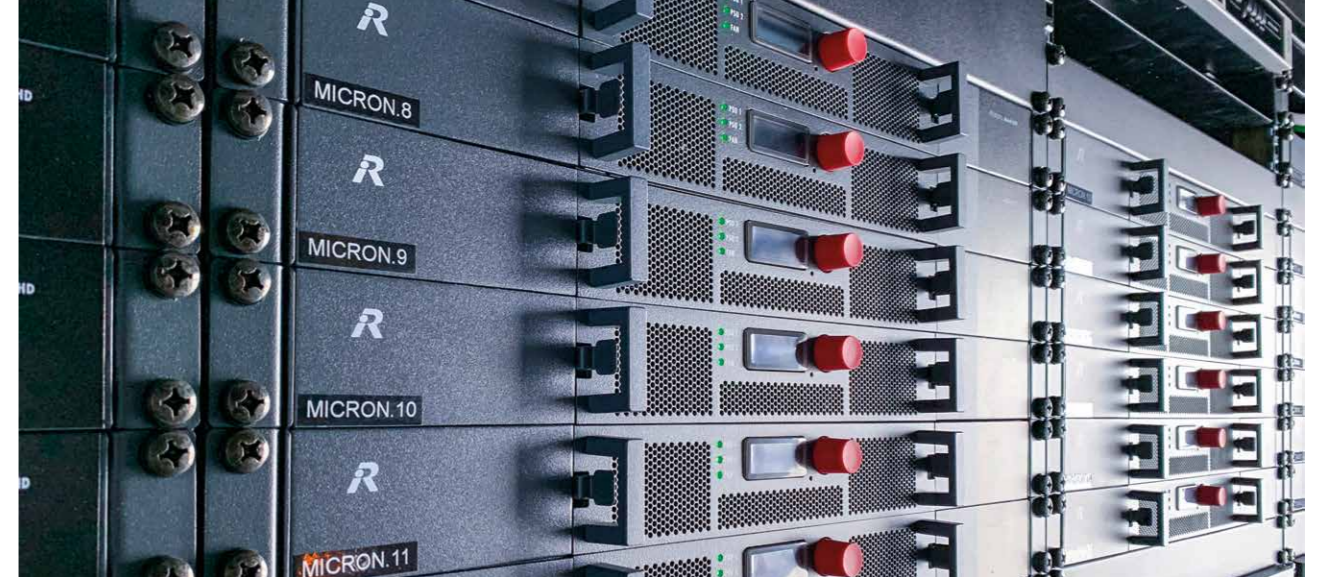
Whatever You Need, Wherever You Need It

A totally software-enabled hardware system, Riedel's MediorNet can turn its hand to a variety of things: it can be a multiviewer or a throw-down signal processor; it can be part of a de-centralized router, a bridge to an IP network, or a point-to-point link for up to 12 bi-directional HD signals. Its highdensity signal interface manages an array of audio, video, and data I/O, and it can provide 12 bi-directional 3G/HD/SD-SDI video ports and two MADI ports for up to 128 audio channels. For data transport and synchronization, MicroN offers a 1 Gbit Ethernet port and eight 10 Gbit SFP ports to provide a total network capacity of 80 Gbit to enable the configuration of a fully redundant, meshed, media network.

Simplified Deployment

Faced with the dual challenge of simplifying his network setups and building in more flexibility to cater for a wide range of clients, Saltzer quickly got on board; 12 years in, his methodology has evolved to ensure there is always enough bandwidth to maximize I/O capacity at every kind of event, as well as provide the flexibility to adapt to changing needs on set.

"Rather than start from scratch for each show, we know there are parameters we can broadly work within, so earlier this year we repackaged some of our MediorNet hardware to make it work for the majority of deployments," he says. Saltzer's deployment consists of 12 x 4U field nodes and two larger truck nodes to hand off to the OB truck. Each portable and wheeled field node is comprised of one MicroN and one Compact Pro, while the truck rack contains multiple MicroN's and either a modular frame or a Compact Pro, both of which have the capacity to expand I/O capabilities.



"Each MicroN frame is based on 10 Gbit links between nodes and the compact pros are based on 4.25 Gbit links," says Saltzer. "We build most of our bandwidth on site around the MicroN 10 gig links so that we're getting the most out of a single strand of fiber by utilizing the full bandwidth of the MicroN frame. One bi-directional SFP equates to six independent bidirectional video signals on just one connection and we take all six 10 Gbit links back to the truck. We also daisy chain two 4.25 Gbit links down to the Compact Pro which gives us extra Ethernet connectivity and some analog audio I/O to deploy in the venue should anyone need it.

"In the truck rack at the OB we typically package four or more MicroN units and either a Compact Pro or a modular frame to give us scope for additional I/O. We also have a rack mounted QC monitor and dedicated router panel which enables us to QC anything coming in and anything leaving us to go to the truck, without moving a cable and without having to patch anything."

Ethernet Tunneling

The system also provides the capacity to add more Ethernet tunnels to the same established network.

"By adding an extra Ethernet card we can pick up 12 additional Ethernet ports at the truck," adds Saltzer. "The way the Ethernet tunnels work - and I think this is a stroke of brilliance on Riedel's part - is that there is no switching, there is no magic behind the curtains. It's a pure Ethernet tunnel and the client can pick whatever size connection they need and the bandwidth automatically scales. There is no switching inside the MediorNet network; it is essentially dropping a media converter on either end so it's all point to point."



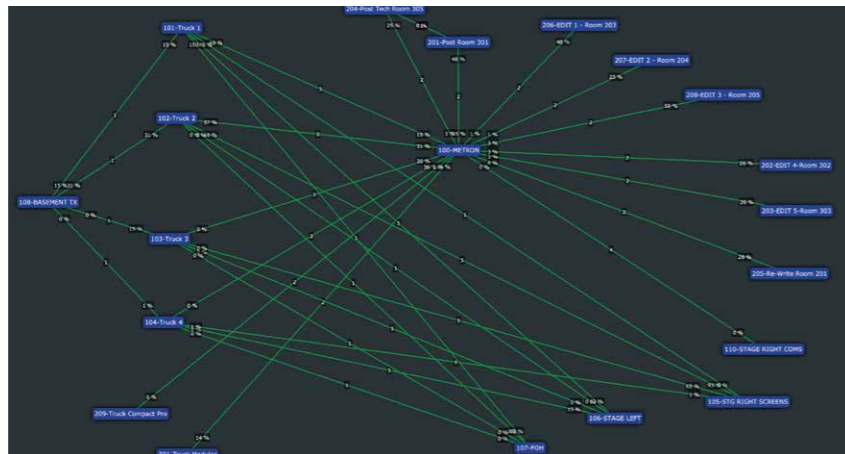
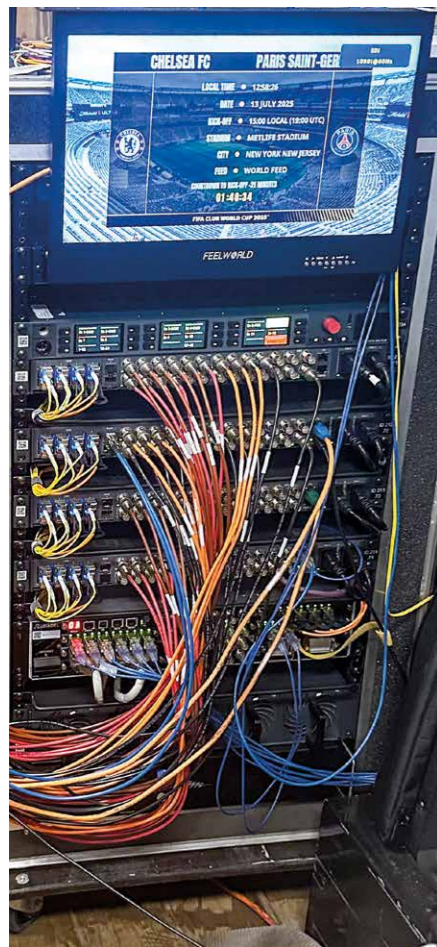
Unlike traditional media networks which require extensive cabling to cater for the variety of interconnections between the truck and the venue, MediorNet simplifies connectivity down to one multicast network cable. This reduces the amount of fiber that needs to be laid, saving money and significantly reducing setup time (Saltzer estimates it typically saves about four hours of install), while also making it easy to scale operations on the fly to incorporate changing requirements.

"Traditionally, if a production needed program video at multiple locations throughout the venue the OB truck will hand that over on multiple patches on the side of the truck," says Saltzer. "With MediorNet we take that signal once, twice if we want a backup, and that distributes throughout the MediorNet system acting as a node-based video router. If the venue needs a feed at multiple locations, they can take it directly from a node rather than dragging more cable across the venue, further simplifying planning and installation.

"We might put nodes at the FOH position to cover the front of house audio and lighting positions, backstage left and right for stage managers to access; we might have one at a Producer table, and we might dedicate one at a screen distribution point. Each field node has the capacity to run up to eight strands of fiber to the truck node, and MediorNet has the flexibility to adapt to any number of field nodes with multiple Ethernet paths, whether they are required for router data, Dante channels, internet, or anything else."

During the most recent US Presidential elections, East Shore Sound also looped in a number of edit suites on the network for production personnel to create edits in real time. Commissioned to provide the network infrastructure on a live, onlocation late-night variety shoot, Saltzer used Riedel Smart Panels in place of the truck's router panels, enabling him to set the whole system up weeks in advance; on site it was simply a matter of dropping the hardware and connecting it.

"We also ended up dropping a node in a number of edit suites so that production could select what they were importing directly into their edit computers in real time and play that out back to the truck," he says. "Because everything was on the MediorNet system on the side of the truck, the truck engineers didn't have to spend hours on site programming a router panel for each of the edit suites: it was all ready to go."



Built-In Redundancy

MediorNet's ability to quickly create a flexible, hybrid infrastructure that supports different combinations of network topologies enables Saltzer to layer the bandwidth and avoid any catastrophic failure should any one piece of hardware fail. Meanwhile, Riedel's realtime diagnostic GUI monitors bandwidth on each individual link. The aim is to provide live feedback on capacity levels of each link in the system and it uses a user-friendly, color-based system which monitors light levels on the fiber and warns of any potential bandwidth issues ahead of time.

"One of the system's greatest strengths is its built-in redundancy," says Saltzer. "We generally adopt a partial mesh architecture which means that if we were to lose a fiber link between point A and point B, it automatically reroutes the signals using the available bandwidth. From a practical perspective it's not dissimilar to working in a 2110 environment, and in the same way it can be challenging to get people to think differently about the network. With MediorNet we're not sending a signal; we're building bandwidth, and the system decides how it's going to use that bandwidth to get the signal from point A to point B. So provided that you have available bandwidth between point A and point B, even if it's not a direct connection between those points, it'll send it as long as you have an available amount of bandwidth."

Bridging The Future

As much as MediorNet's unique hybrid nature keeps things simple for East Shore Sound's diverse mix of client needs, Saltzer still sees it as a problem solver, and as broadcasters increasingly ease into more IP environments where handoff can be backhauled over any kind of connectivity path, MediorNet can act as a bridge to them all.

"I definitely see MediorNet as a bridge," says Saltzer. "If an OB truck is 2110 based, it still needs to have on ramps and off ramps for traditional audio and video. That can work with a set number of field kits, but what happens when that truck gets booked on a show where they need six or eight field kits? I see MediorNet being a bridge to accelerate getting that plug and play I/O hardware out in the field."

"On larger events, like video gaming where there's a lot of in-house screen content and a simultaneous in-house show happening at the same time as the broadcast show, the broadcast truck needs to interface with both. MediorNet is a bridge there too, adapting to both requirements and across multiple formats on the same decentralized mesh network."



OPENING DOORS IN KUALA LUMPUR

NEW GLOBAL SOFTWARE AND IT SUPPORT HUB TO STRENGTHEN RIEDEL'S SERVICE CAPABILITIES

■ On January 28, 2026, Riedel Communications opened the doors of its new office in Kuala Lumpur, Malaysia. With this new location, Riedel Communications is expanding its global capabilities with software support and customer service. The focus is particularly on strategic orientation towards service- and software-based media workflows to enable specialized 24/7 support worldwide.

The new branch, with a total of twelve recruited software and IT engineers, is headed by Moustapha Kamal, Service and Support Manager at Riedel Communications, who has returned to his home country after four years in Germany. Together, the team supports the implementation and support of Riedel solutions such as Virtual SmartPanels and the SAME Smart Audio & Mixing Engine.

Riedel welcomed Malaysian partners and customers to the new premises for this festive occasion. In addition to a large buffet, the opening ceremony provided a good opportunity for practical technology presentations and networking opportunities.

"As our solutions increasingly move into software and IT-based environments, the need for continuous, specialist support has become more critical than ever. Our team in Kuala Lumpur works across shifts, including weekends, to deliver global expertise for deploying, supporting, and maintaining customer applications in complex IT infrastructures." - Mustapha Kamal.



RIGHT IN THE THICK OF THINGS



TRAINING AND DUAL STUDY PROGRAMS AT RIEDEL



■ Learning here at Riedel goes far beyond lecture halls and textbooks – that’s what I quickly realized when I started my dual study program at Riedel last year. My name is Hannah and I am currently studying “Communication & Public Relations” as part of Riedel’s dual study programs in Wuppertal. Being part of the Marketing team and the whole company from day one has given me the opportunity to experience how closely theory and practice can work together. Because here at Riedel, you don’t just observe; you actively participate from the very beginning and contribute to the diversity of a large team.

From budding IT specialists to logistics specialists and electronics technicians for devices and systems to a wide range of training programs and dual study programs in the commercial sector – Riedel offers a broad spectrum for starting your career. Currently, around 45 trainees and dual students in various years of training are completing their training at the headquarters in Wuppertal. The training is structured in a practice-oriented manner: as a rule, Riedel’s young talents spend approximately 60% of their time in the company and 40% in vocational school or university. Dual students, on the other hand, often work on a monthly block model. In the commercial sector in particular, regular departmental changes provide comprehensive insight into different areas of the company. However, the development of a training program is also in full swing at Riedel’s locations in America. The aim is to raise awareness of Riedel among teenagers and young adults through close cooperation with regional schools and universities and to inspire them with interesting projects and presentations of the product portfolio.

Voices of our young talents

But how do Riedel’s trainees and dual students experience their everyday working lives in concrete terms, and what role do they play in the company? What experiences have already shaped them, and what makes Riedel Communications special for them as a practical partner?

Their daily work is characterized by early involvement, growing responsibility, and the opportunity to gain diverse insights into the various facets of the company’s divisions. Tasks quickly move beyond observation, as trainees become part of projects and teams that operate both regional and international stages. For Tim Schnell, Trainee Electronics, this meant: “During my training I’ve already been involved in projects like the German Bundesliga, SailGP races and even the Eurovision Song Contest” – a striking example of how quickly young talents can find themselves contributing to globally well-known events.



What stands out most to many trainees is not only the scale of projects, but the atmosphere between colleagues and other trainees. As Miká Gonzewski, Trainee IT explains, „It’s not just the work itself that’s exciting, but also the environment: you hear impressive stories about events – and eventually become part of them yourself.” Being surrounded by people who are working internationally creates a unique sense of connection to the world of live events and media technology.

Aside from all these exciting insights, Riedel trainees experience a steady growth in responsibility. Lilian Zarniko, Trainee Commercial, recalls the individual development within her internship “I was allowed to grow with the company right from the start: the tasks became more demanding, the responsibility greater – and the trust palpable.” This progress is also supported by “an exceptionally strong sense of solidarity among us trainees – across departments and on equal footing”, as Lilian points out.

When asked what makes Riedel stand out, our trainees consistently pointed out the same values: responsibility, meaningful involvement, and an open corporate culture. The balance of exciting topics, trust and personal development makes the experience here at Riedel unique.



At Riedel, training and dual study programs are meant to symbolize more than just a simple career start – they open new doors and are the beginning of a long-term perspective. Those who get involved and show commitment have a good chance of remaining part of the team after successfully completing their training or studies. Approximately 90% of young employees take advantage of this offer, which has enabled us to hire young talent in almost all areas of the company in recent years. Our goal here at Riedel is not only to invest in the professional qualifications of our youngest employees, but also to lay the foundation for a shared future.

“// For me, Riedel is special as a practical training partner because it combines everything: exciting topics, responsibility, and an environment that focuses on personal development.”

Jesse Hölterhoff
Trainee Commercial

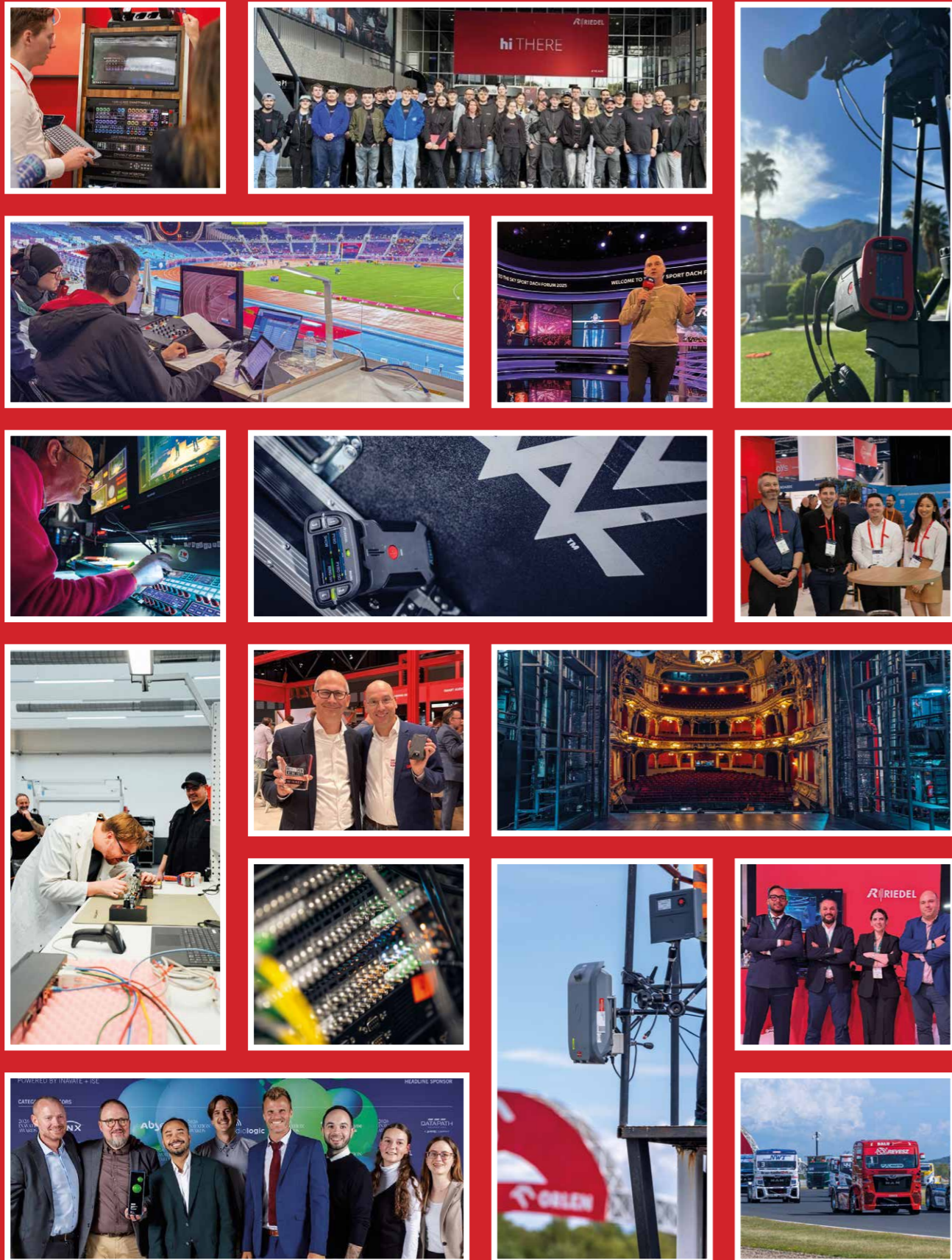


“// For me, Riedel stands out because of its practical approach and open corporate culture. Here, you’re not just trained, but actively involved, encouraged, and taken seriously – that’s what makes the difference”

Anna Gladcenko
Dual Student of Business Administration

PROJECT PICTURES

YOUR DAILY UPDATE



#C4908



DO MORE TODAY. STAY IN CONTROL TOMORROW.

ON AN INFRASTRUCTURE THAT EVOLVES WITH YOU.



MediorNet!!!

MediorNet unifies SDI and IP processing, routing, and multiviewing within a modular, distributed ecosystem that evolves with industry standards – from **baseband to full IP** – seamlessly **integrated** and **controlled** through Riedel's **hi** human interface.

hi HUMAN INTERFACE
Unified control across MediorNet and hybrid SDI/IP productions.

- Vendor-agnostic, browser-based broadcast control system
- Deep integration with MediorNet for routing, processing, multiviewing
- Bridges baseband, SDI, and IP workflows in a unified system

MEDIORNET HORIZON ST 2110 MULTIVIEWER APP
Native IP multiviewing for modern production environments.

- ST 2110 multiviewer with NMOS IS-04/05
- Up to 128 PIPs and 16 heads in 1 RU
- Proven MediorNet multiviewer workflows, now extended into IP



riedel.net

Artist

Countdown

05



VISION 01



VISION 02



VISION 03



VISION 04



VISION 05