

:update

#033



REFEREES & REPLAYS

SIMPLIFIED

NOTRE DAME'S WINNING
PLAY WITH SIMPLYLIVE

■ The University of Notre Dame, a longtime Riedel customer, needed a flexible, easy-to-use replay system to streamline the way referees review plays and make critical decisions during on-campus sports events, including lacrosse, soccer, baseball, and softball. The previous solution was cumbersome, and purchasing multiple iterations for different locations was too expensive. To solve the problem, the university turned to Riedel's RefBox solution, part of the company's SimplyLive Production Suite.

Notre Dame integrated the RefBox system, which includes a 24-inch touchscreen monitor and a compact Intel NUC computer, into its existing campus network infrastructure to support live sports production. With the system's intuitive touchscreen controls, officials can quickly review multiple camera angles, zoom in on crucial moments, and make informed decisions without relying on external operators or complex communication processes. The fact that referees can conduct their own replay analysis independently is what truly sets the RefBox apart. What's more, production teams can easily move the RefBox



to wherever it is needed by connecting it directly to the campus network. The RefBox's portability and straightforward setup mean the university can efficiently manage referee reviews for various sports across different venues on campus.

Beyond implementing RefBox to streamline officiating, Notre Dame has also explored using Riedel's SimplyLive system for production. In this new and creative use of SimplyLive, the system's native NDI capabilities stream and pull replays of club rugby matches and other events. For club rugby matches, the SimplyLive system integrates four NDI camera feeds over the campus network, enabling recording, replay, and full production capabilities within a single, stand-alone system. Users can

easily convert between a production suite and RefBox in just two button presses. One operator can simultaneously serve as director, technical director, and replay operator. Moreover, the intuitive user interface's familiar touch and swipe controls remain consistent across different modes, making the transition between production suite, replay suite, and RefBox remarkably smooth for operators. This adaptability and ease of use demonstrate the SimplyLive system's potential to serve multiple roles within a university's sports broadcasting ecosystem - from officiating support to comprehensive production capabilities.

Riedel's RefBox has truly transformed Notre Dame's officiating process. The response from both referees and the game management

team has been overwhelmingly positive, with particular praise for RefBox's user-friendly interface and impressive efficiency. In fact, some have said RefBox is the most intuitive replay system the school's officials have ever used. On top of that, being able to deploy RefBox across multiple venues with minimal setup time has significantly enhanced Notre Dame's game-day operations. Operators can literally roll it out, turn it on, plug it in, and it's ready to go, taking just 10 minutes to verify that all inputs are correct, with all configuration handled server-side and no user setup required.



WATER COOLER TALK

ANTHONY ZUYDERHOFF AND JAN EVELEENS ON

LEADERSHIP



Anthony Zuyderhoff

Role: Executive Director Global Sales

Joined Riedel: 2025

Background: 20+ years in video industry, primarily in sales and general management

Previous Roles: VP of Sales, Marketing, and Customer Enablement at CommScope; CRO at Thomson Broadcast

Leadership Style: Collaborative, diplomatic, mentorship

Key Strengths: Team building, internal & external communication, strategic growth

Career Philosophy: Communicate, adapt, and bring people along on the journey

Jan Eveleens

Role: CEO Product Division

Joined Riedel: 2018

Background: Computer engineer turned business leader

Previous Roles: CEO at Axon; Director Business Development Video & COO Product Division at Riedel

Leadership Style: Pragmatic, hands-on, team-oriented

Key Strengths: Problem-solving, motivating teams, adaptability

Career Philosophy: Embrace opportunities, stay flexible, and lead with trust

Jan Eveleens

CEO Product Division



WATER COOLER TALK

■ Anthony Zuyderhoff joined Riedel as Executive Director Global Sales earlier this year, bringing with him over 20 years of experience in the video industry, while industry veteran Jan Eveleens stepped up as CEO Product Division at the start of 2025 after six years with the company. With decades of leadership experience between them, these

two have navigated dynamic career paths, built high-performing teams, and adapted to a rapidly evolving industry. Their combined expertise makes them the perfect pair to talk about leadership, career development, and what it takes to succeed in the world of global broadcast and event productions.

Jan: Hey Anthony! Welcome to the Riedel family! You've been with us for a little while now – how's it been so far? And how did you end up here?

Anthony: Hey Jan! The welcome has been tremendous. I joined right around the time Riedel did regional global kick-offs, so within a couple of weeks, I visited and got to know my teams all over the world. It meant a lot of miles but a perfect way to meet a maximum number of people and get a feel for the company. I'm really impressed with the caliber of my team, and I'm very excited to help remove obstacles and strategize new growth, which are things I absolutely love to do. When Riedel started looking for a fresh perspective from outside their core industry, it really felt like the perfect opportunity for me. It ticked all the boxes – cultural fit, segment, people, growth, and value-add. So... here I am! What's your story? How did you end up heading Riedel's Product Division?

Jan: I've basically been in this industry my entire life. I started as a computer engineer but quickly transitioned into television technology, working across hardware, software development, and project management. Fast-forward a few years, I found myself in the position of CEO at Axon before joining Riedel's business development unit. Before I knew it, I was leading operations, and at the end of last year, Thomas (Riedel) asked me to step up as CEO Product Division. I never planned for it – life just led me here. It's been quite the journey, but a rewarding one.

Anthony: Careers have a funny way of unfolding, don't they? What do you think got you where you are today?

Jan: Hmm... I'd say that being a rather easy-going, approachable fellow probably helped. Also, keeping interested in learning and trying new things, and being solutions oriented. I see problems and challenges as a normal part of everyday life that are just waiting for a solution. Also, over the years, I might have learned a thing or two about motivating people. Which of your qualities or quirks helped you on your journey?

Anthony: I'd also list motivation, mentoring, and diplomacy as some of my strengths that helped me build and lead successful teams. I'm sure I have some "quirks" as well – perhaps the one I'm most known for is loving spreadsheets a little too much! But overall, I'd like to think that passion was speaking a key career driver.

Jan: Speaking of passion... What has kept you passionate about technology and our industry all these years?

Anthony: This part of the industry is evolving so rapidly, so there's always something new, something exciting to learn just around the corner. Right now, the shift towards a creator-driven economy and the explosion of OTT live production make this a fascinating time to be involved.

Jan: Yeah, and we're working at the heart of it all! Riedel's mix of high-tech innovation and high-profile events will always keep things exciting. Our industry really thrives on pushing boundaries – higher resolutions, better quality, and more efficient workflows. And live events? There's just something magic about them. People in this industry know that 'the show must go on' and are therefore willing to take risks and try crazy things that wouldn't fly elsewhere. This innovation-minded and venturesome environment is one where a company like Riedel can thrive. As a newcomer: How would you describe Riedel in a nutshell? What makes us stand out?

Anthony: Even before joining, I was aware of Riedel's strong brand reputation. But experiencing it firsthand, I see a deep passion within the company. Many say "customer first" but at Riedel, we truly live it, working behind the scenes to ensure our customers shine. We're not flashy, but we're there 24/7, making sure everything runs smoothly. That dedication to our customers' success is what makes Riedel unique. Even after my short time here, I can already feel that passion and commitment in everything we do.

Jan: I agree, Thomas has built something truly special here. Of course, we're known for innovation, technology, and quality, but there's something more. A certain spirit here – a sense of family, fairness, and equality – sets us apart from other brands. What would you say are the key qualities that make a strong leader in this space?

Anthony: Communication is number one – both listening and articulating a vision. Change is constant, and not everyone embraces it at the same pace. That's why leaders need to be open, transparent, and able to help teams see the bigger picture. What do you think?

Jan: I'd add open-mindedness and agility. Technology changes at lightning speed, and leaders can't afford to be rigid. You must stay curious, take calculated risks, and be willing to adapt.

Anthony: I couldn't agree more. Have you had any pivotal moments that shaped your leadership approach?

Jan: While I can't think of a specific moment, I know that I was given big responsibilities early in my career, before I felt truly ready. In hindsight, I can say that it pushed me out of my comfort zone and shaped how I lead today.

Anthony: I was once gently accused of trying to do too many things at once and one expression that still sticks with me today is "Don't try to boil the ocean. Start with a teacup of water and go from there". I learned from this, but what I would never change is trying to make positive changes and continuously improving myself and hopefully the team around me. I just start with a glass of water first.

Jan: That's great advice. While we're on the subject – if you could go back and tell your younger self something, what would it be?

Anthony: Be more patient. I always wanted to move fast, but sometimes, taking a step back is just as important as moving forward. Also, work-life balance matters – I missed out on a lot while constantly traveling. What about you?

Jan: I'd probably tell him: let life guide you. Careers are shaped by opportunities and choices, and personally I wouldn't change much. But like you, I wish I had traveled less for work at times. You don't realize what you're missing until later.

Anthony: True. Now, if leadership were a game, what kind of player would you be – the strategist, the playmaker, or the one who rallies the team?

Jan: I guess I am a mix of all these. It really depends on the phase of the game.

Anthony: Same here. There are times when you can step back and take the time to strategize and brainstorm; there are other times when you need to roll up your sleeves and get into the trenches alongside your colleagues. And if you feel that the team is low on energy, you need to help by bringing some humor and downtime to rebound and recharge.

Jan: Looking ahead, how do you envision the media and entertainment industry evolving in the next few years?

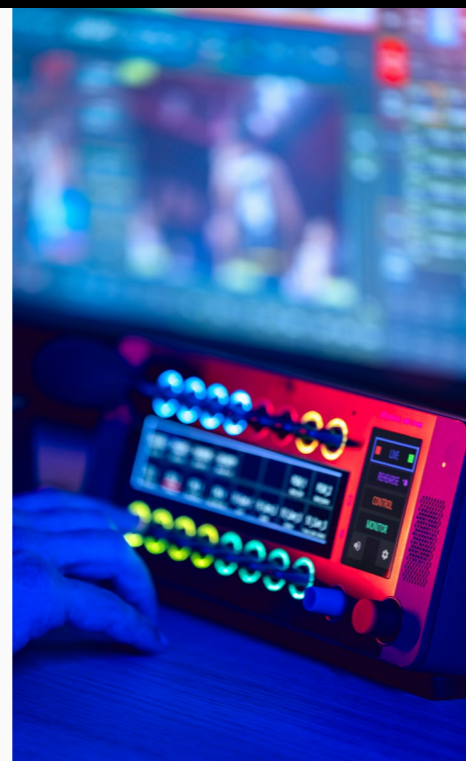
Anthony: The world has never consumed as much content as we do today, and this will probably keep going up. On the other hand, despite watching everything 'on demand' and having access to an infinite catalog, there is an insatiable appetite for live events that people want to experience live rather than watching content on a small or even large screen. Therefore, the future for Riedel and our industry remains very bright – we just need to continue to reinvent ourselves to ensure that we remain at the forefront of innovation.

Jan: Agreed. We don't have a crystal ball, but one thing is clear: the industry will continue evolving at an incredible pace, and we need to adapt right along with it. Sounds like an exciting road ahead. Glad we're on this journey together!

Anthony Zuyderhoff

Executive Director Global Sales





DSP-1216HL

1200 SERIES DESKTOP SMARTPANEL

■ The DSP-1216HL is the latest addition to Riedel's 1200 Series SmartPanels, bringing the power of software-defined intercom, monitoring and control to a compact, ergonomic desktop form factor. Designed for professionals in broadcast, live events, theaters, OB vans, and sports venues, this multifunctional panel offers maximum flexibility while saving valuable space.

Much like a smartphone, a SmartPanel allows users to adapt its functionality to their workflows by leveraging various software apps instead of multiple single-purpose panels. The Desktop SmartPanel supports the full suite of 1200 Series SmartPanel apps, including the Intercom

App for real-time communication, the Control Panel App for seamless third-party integration, and the Audio Monitoring App for high-performance audio monitoring. Users can run multiple apps in parallel, maximizing workflow efficiency and reducing hardware requirements.

Engineered with user comfort and efficiency in mind, the DSP-1216HL eliminates the need for rack-mounted panels adapted for desktop use. It delivers best-in-class usability with hybrid lever keys, high-resolution touchscreens, and an integrated 2.1 speaker system – all in a sleek, space-saving design.



- Space-saving design with improved ergonomics for desktop use
- 16 Hybrid Lever Keys with integrated rotary encoder
- Full-color, sunlight-readable touch displays & RGB LED rings
- Supports Intercom, audio monitoring and control panel applications

- Artist connectivity via AES67(SMPTE ST2110-30&31) or AES3
- SMPTE 2022-7 redundancy
- Integrated 2.1 Speaker System delivering high-quality audio
- VESA mounting option

SIMPLYLIVE RIVIEW

NEW

RV4 / RV8 / RV16

■ SimplyLive RiView video review solutions bring the most user friendly and intuitive application to the market for official, coaching or any video review scenarios.

RiView solutions are available in three main bundles, so you can select the ideal configuration for your budget. The RiView RV4, RV8 and RV16 bundles allow you to choose from 4, 8 or 16 camera inputs for your HD events in 720p, 1080i or 1080p SDR formats.

The Riedel RiView base configurations include a single user setup with options to expand for up to 3 operators per system. This flexibility can

offer the ability for the game official or referee to easily review the action themselves or expand to include team reviews or other users to manage their own control from the same sources.



SIMPLYLIVE RIMOTION

R16 / R168

NEW

■ SimplyLive RiMotion live replay solutions are second to none in terms of user friendliness and scalability – breaking with traditional concepts and bringing a modernized user experience to live replay.

With the release of RiMotion R16 & R168, RiMotion solutions are available in seven different bundles, so you'll find just the right one for your production. RiMotion R6, R8, R10, R12 and R16 let you choose from 6 to 16 configurable channels for 4 to 12 camera inputs, while the R84 and R168 offer HDR and UHD support with options for 4 or 8 UHD channels and up to 8 or 16 1080p HDR channels



SIMPLYLIVE VENUE GATEWAY

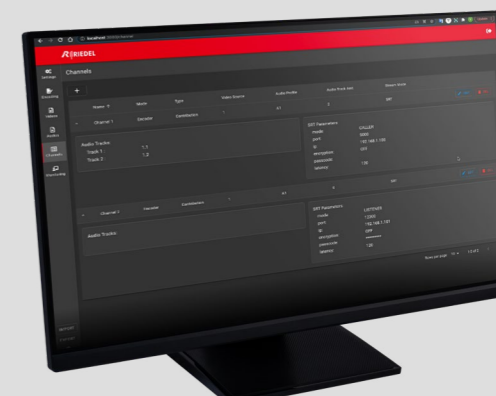
8 STANDARD / 8 ADVANCED / 1612 ADVANCED

NEW

■ The SimplyLive Venue Gateway is a low-latency, bi-directional, multi-channel and multi-format contribution appliance bridging broadcast production infrastructures with distant venues. It aggregates and transports video signals, audio signals, and tally.

Supporting SRT and SDI connectivity, the Venue Gateway offers great agility for contribution feed delivery. Featuring codec formats like H.264, the gateway solution provides software defined low-latency encoding and decoding on decoding on 8, 12 or 16 bi-directional channels with the highest broadcast quality. Its built-in low latency multiviewer lets remote or on-site engineers view all sources in real time and test the network infrastructure with pre-loaded content.

The Venue Gateway is available as Standard or Advanced versions, with the Venue Gateway Standard 8 channel offering a more compact SDR model, while the Venue Gateway Advanced brings HDR capabilities in the respective 1 RU or 2RU frames.



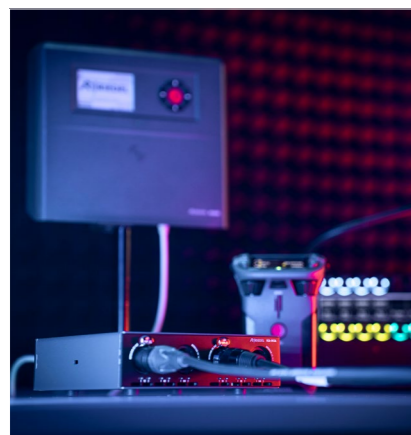


Seamless, efficient, and reliable signal distribution is the backbone of any successful live production. Riedel's StageLink™ family of smart edge devices redefines connectivity by offering a flexible, decentralized approach to audio and intercom networking. Designed for the demands of broadcast, live events, and studio environments, these compact, rugged I/O boxes for seamless network streaming can be placed anywhere in your event or facility to flexibly capture and distribute signals through a generic IP network.

Unlike traditional setups that rely on expensive and inflexible specialized cabling for each signal type, StageLink edge devices utilize standard network components to establish a decentralized network. Whether connecting microphones, intercom, GPIO devices, or any other audio-enabled device, StageLink transmits your audio and control data signals via IP and based on open standards like ST2110-30/31 (AES67), NMOS IS-04, IS-05 & IS-08, while eliminating the complexities of IP configurations and the hassles of analog systems.

The intelligence of the StageLink audio and intercom range lies in its unique combination of features: Its format-agnostic Universal Inputs seamlessly handle any signal level, processing each independently without interference – and eliminating the need for manual adjustments. Remote management capabilities give engineers full visibility over endpoints, enabling them to monitor and control all ports and signals remotely – even during live events with untrained personnel – by activating blinking LEDs to identify devices or even specific ports when needed. Designed for durability and discretion, StageLink is impact-resistant, optimized for dark environments, and equipped with professional-grade connections and mounting options.

Riedel's StageLink edge devices are available in several tailored interface versions, offering a cost-effective alternative to bulky, one-size-fits-all stage boxes. With StageLink, every signal finds its place in the network – seamlessly, efficiently, and reliably. Whether you're setting the stage for a theatrical performance, orchestrating corporate presentations, or managing an expansive broadcast audio production, StageLink ensures your production is as polished and professional as it deserves to be.



SMART EDGE DEVICES FOR SEAMLESS NETWORK STREAMING



NSA-003A | 2-Wire

Audio interface box that enables seamless integration of third-party legacy 2-wire partylines into Artist and Bolero systems via SMPTE 2110.

- 2-Wire Analog Intercom Device w/ Auto Echo Cancelling
- 2 x 2-Wire: Clearcom Mode / RTS Mode 1 or 2 PL(s)
- 1 x Stereo USB-Audio In/Out, 3 x GPIOs



NSA-004A | Quad In

4x analog (Mic/Line) & digital (AES3) inputs for applications where small portions of inputs with flexible connection variations must be distributed over a wider area.

- 4 x Universal Inputs (Mic/Line & AES3)
- 1 x Stereo USB-Audio In/Out



NSA-005A | Quad Out

Small form factor device with 4x analog Line/digital (AES3) outputs for applications where small portions of outputs with flexible connection variations must be distributed over a wider area.

- 4 x Universal Outputs (Line & AES3)
- 1 x Stereo USB-Audio In/Out



NSA-006A | Workplace

Compact all-in-one interface solution designed to meet all audio needs of a media workplace, including Mic-Pre, HP-Out, and stereo speakers.

- 1 x Universal Input (Mic/Line & AES3)
- 1 x Headphones Output w/ volume rotary & LED-Bar
- 2 x Universal Outputs, (Line & AES3)
- 1 x Stereo USB-Audio In/Out, 3 x GPIOs



NSA-007A | 2-Wire

Compact audio interface that features 2 inputs and 2 outputs in broadcast quality, functions in Artist and Bolero as a classical dual analog or digital intercom 4-Wire interface can also function as a dual analog or digital 4-wire device for Artist and Bolero intercom systems.

- 2 x Universal Inputs (Mic/Line & AES3), 2 x Universal Outputs (Line & AES3)
- 1 x Stereo USB-Audio In/Out, 3 x GPIOs



NSA-010C | GPIO

Network-based GPIO interface that operates in either integrated Artist/Bolero mode or standalone mode, enabling third-party connections via NMOS IS-07.

- 16 x GPIs, 16 x GPOs, 2 x Control Voltage Inputs, 2 x Control Voltage Outputs (phoenix connectors)
- 1 x Ethernet, 2 x EtherCON ports supporting control data redundancy



BEST OF BOTH WORLDS

VIDELIO'S FLEXIBLE HYBRID PRODUCTION ENVIRONMENT



by
Patrick Mandl
Product Manager Video
Riedel Communications

■ As the broadcast and live production industry navigates the gradual yet inevitable transition from SDI to IP, hybrid solutions have emerged as a smart convergence of traditional and modern workflows. These solutions bridge baseband systems with cutting-edge IP technologies, enabling operators to leverage the best of both worlds. At Riedel Communications, our mission is to simplify this migration and empower our clients to meet the demands of modern production environments without unnecessary disruption. One of the most compelling examples of this approach is Videlio Events recent deployment of our award-winning MediorNet Horizon platform, which enabled them to build temporary hybrid environments for back-to-back productions across France.

A Modular Approach for Flexibility and Agility

Videlio, a renowned French systems integrator and service provider specializing in live productions for events, sports, and corporate applications, has broken new ground with Riedel's MediorNet Horizon and MicroN UHD platforms. For the creation of their next-generation flyaway control rooms, Videlio Events sought a solution that could simplify operations, provide scalability, and prepare their team for a gradual, risk-free migration to IP. Their vision was clear: a hybrid approach that ensured agility and operational continuity while reducing complexity and maintaining performance.

To meet this challenge, Videlio designed three standalone flyaway video control rooms, each built around MediorNet Horizon providing IP gateways and UDX & SDR/HDR conversion, as well as MediorNet MicroN UHD for routing and multiviewing. MediorNet's modular architecture allows the control rooms to function independently or to interconnect seamlessly – even across distances – offering unparalleled flexibility. This innovation proved critical during major multi-site events such as the 2024 multi-sport opening ceremonies in Paris or the WorldSkills competition in Lyon, where the flyaway kits first demonstrated their exceptional adaptability.



"We were already familiar with the benefits of MediorNet product line and especially its valuable decentralized architecture. That's why we knew that it would be the right choice for our modular control rooms. Horizon then sealed the deal: The sheer amount of horsepower we get out of this amazing 1RU processing platform is impressive."

Vincent Varoquier
Technical Director, Videlio.

Streamlined Operations in Constricted Environments

A key benefit of the MediorNet solution lies in its ability to dramatically simplify signal management. A traditional setup would have required extensive cabling – up to 100 cables in some cases – for interconnections between the control room and video mixer. With MediorNet, Videlio reduced this to just two cables, freeing valuable space in the compact and often challenging environments of flyaway kits. Moreover, Horizon's Up-Down-Cross and HDR-SDR conversion capabilities and MicroN

UHD's built-in glue features like frame sync, embedders/de-embedders and test pattern generators, minimized the need for additional hardware, further streamlining workflows and reducing operational expenses.

This simplification is not merely about convenience. It allows Videlio to focus on delivering premium service to their clients, knowing that the technology will function reliably in the background. The reduction in setup and teardown times also proved invaluable, enabling the team to quickly reconfigure and redeploy assets for back-to-back events.



"One of the greatest benefits of Horizon has been how drastically it simplified our signal management process. What used to take us hours with hundreds of cables now takes just minutes with two. It's a game-changer for our flyaway kits."

Vincent Varoquier
Technical Director, Videlio.

A Pragmatic Pathway to IP Adoption

The hybrid nature of Horizon provides Videlio Events with a practical and phased approach to IP adoption. By supporting both SDI and SMPTE-2110 IP technologies within a single frame, Horizon enables the team to continue leveraging familiar SDI workflows while gradually integrating IP capabilities. This allows Videlio Events to take advantage of IP's scalability, flexibility, and efficiency without overburdening operators or introducing unnecessary risks.

As Videlio's operators were not all IP experts, the ability to maintain confidence and comfort in their workflows was critical. Horizon empowered them to explore the benefits of IP at their own pace, ensuring that their transition was both smooth and controlled. For Videlio, this pragmatic approach underscored a broader industry truth: IP adoption should be driven by tangible operational benefits, not by industry trends.



"IP must be adopted for its real operational benefits and not because it's a trend. Over the last few years, we've seen Riedel embrace the SMPTE-2110 video over IP shift with amazing products such as MuoN, FusioN or VirtU, but we opted to hold out for a true hybrid solution because going full IP at once would have been a radical change for our organization and our teams. As a business, our achievements rely on our people: making them feel at home with their new tools and workflows was a key part of our transition equation. We knew we needed a proper migration plan that gives us full control over risk, pace and budget considerations. The expanded MediorNet family delivered all that and more."

Vincent Varoquier, Technical Director, Videlio.

Modular Production Islands for Back-to-Back Events

The interconnection capabilities of HorizoN and MicroN UHD enables Videlio to create flexible production „islands“ that can be grouped or separated based on specific project needs. With Riedel's MediorMind orchestration layer, operators can manage these islands with ease, benefiting from features like offline configuration and intuitive workflow management. Those features, alongside the capability to add or remove preconfigured MediorNet frames or to save the Multiviewer layouts across the network, helped bringing the setup and teardown times down to a minimum. This proved instrumental during the 2024 WorldSkills event in Lyon, where Videlio redeployed assets originally used for the Paris multi-sport ceremonies. Despite the tight turnaround, the HorizoN-enabled control rooms delivered high-quality production support for both the live and broadcast elements of the event, reinforcing Videlio's reputation as a leader in live production.



"With HorizoN, we've achieved the agility to reconfigure and redeploy assets between events in record time. From the Paris Games to Lyon Worldskills within 5 days - with our new hybrid MediorNet solution, we know we can deliver the premium-quality service our clients expect."

Vincent Varoquier, Technical Director, Videlio.

Empowering People Through Technology

At Riedel, we believe that successful technology deployment hinges on empowering the people who use it. The hybrid design of HorizoN reflects this philosophy, enabling operators to remain productive and confident as they transition to new workflows. As Videlio Events team experienced firsthand, HorizoN simplifies day-to-day operations while providing a robust foundation for future innovation. This project demonstrates that hybrid solutions like HorizoN are not just a bridge to IP but a comprehensive answer to the challenges of modern live production. By combining the reliability of SDI with the potential of IP, HorizoN delivers the best of both worlds - allowing teams like Videlio's to embrace the future without losing sight of their present goals.



"The relationship between Videlio and Riedel has grown over more than 10 years, which is certainly a proof of mutual trust. By always keeping an open ear for the challenges we face, Riedel has become more than our technology provider, but our trusted advisor."

**Vincent Varoquier
Technical Director, Videlio.**



STRONGER TOGETHER

RIEDEL & NMK ELECTRONICS BRING NEXT-LEVEL AV TO THE MIDDLE EAST

■ At ISE 2025 in Barcelona, our EEMEA team sealed the deal on a strategic partnership with NMK Electronics, a Midwich Group company and a leading distributor of professional AV solutions in the Middle East. This collaboration marks a significant milestone in our mission to bring cutting-edge real-time signal distribution and communication solutions to a broader audience across the globe.

With AV integration becoming increasingly complex, this partnership ensures that system integrators, consultants, and end-users in the Middle East have direct access to our industry-leading solutions. By adding our Artist intercom ecosystem and Bolero wireless intercom to its portfolio, NMK Electronics is further enhancing its ability to provide future-ready solutions for broadcast, live events, corporate AV, and beyond.



"Partnering with Riedel Communications is a testament to our dedication to bringing the most innovative AV solutions to the market. As the industry evolves, it's crucial for us to align with brands that share our vision for excellence and technological advancement. Riedel's expertise in delivering state-of-the-art communication and signal solutions makes them an ideal fit for our growing ecosystem of partners."

Nicolas Cox, Managing Director, NMK Electronics

NMK Electronics has built a reputation for delivering high-quality AV solutions and strong customer support. Working together, we will bring next-generation communication and signal transport technologies to the region, ensuring integrators and end-users benefit from the very best the industry has to offer.

For us at Riedel, this partnership is about more than just product distribution - it's about collaboration, knowledge-sharing, and empowering AV professionals with the right tools for success. Our Artist intercom, a fully scalable and software-defined system, is designed to integrate seamlessly into modern workflows, supporting key IP standards such as SMPTE 2110, AES67, and Dante. When paired with Bolero, our state-of-the-art wireless intercom, users gain unparalleled mobility, clarity, and reliability - even in the most challenging environments.

By joining forces, Riedel and NMK Electronics aim to equip Middle Eastern AV professionals with the tools they need to push creative and technical boundaries. With a shared commitment to innovation, knowledge-sharing, and exceptional service, this partnership will redefine how AV solutions are deployed and utilized across the region.



by
Tobias Kronenwett
Regional Sales Director EEMEA
Riedel Communications

Published by

**BROADCAST
THE BRIDGE**
original independent content



PRESTONWOOD'S ICONIC DOMED ROOF

A SIGNAL CHALLENGE

■ Prestonwood Baptist Church has long been a cornerstone of faith and community for congregants in Dallas, Texas. Yet with two campuses spanning 27 miles and a soaring, metal-framed worship center that seats thousands, the church's media team faced unique technical hurdles in delivering seamless audiovisual experiences. For years, their production crews grappled with wireless signal interference caused by the building's domed architecture and elevated location – a challenge that conventional systems struggled to overcome.



The turning point came when Prestonwood discovered Riedel's Bolero wireless intercom system. Initially adopted to solve communication issues in their acoustically complex building, Bolero's reliability and innovation quickly won over the team, becoming the backbone of Prestonwood's operations. The wireless system's flexibility allowed staff to move freely across the campus while maintaining crystal-clear communication, whether coordinating camera operators or managing stage cues.

Bolero's success paved the way for a broader Riedel overhaul. The church upgraded to a full Artist intercom ecosystem, anchored by a robust Artist-1024 matrix and intuitive SmartPanels. These tools unified communications across audio, video, lighting, and stage teams, enabling customizable workflows through features like remote keys and Bluetooth integration. Moreover, the system's adaptability allows for instant reconfiguration during different types of events, ensuring every team remains perfectly synchronized.

But Prestonwood's ambitions didn't stop at intercoms. To bridge their two campuses, the church deployed Riedel's MediorNet – a real-time media network that routes video, audio, and data over dark fiber. What began as a video distribution solution soon expanded into a multipurpose infrastructure, linking student ministry buildings and enabling creative production approaches. Thanks to its versatility, MediorNet's became more than just a signal transportation system; it's a tool that allows Prestonwood to explore unprecedented production possibilities with remarkable reliability.

The integration, designed in collaboration with Broadcast Technical Services and Riedel consultants, reflects the church's commitment to technological excellence. Today, Prestonwood's services blend tradition with cutting-edge innovation, all powered by systems that work as harmoniously as the community they serve. From the sanctuary's vaulted ceilings to the farthest reaches of its campuses, Riedel's solutions ensure that every word, note, and moment of connection reaches its audience – without missing a beat.



IMPRINT

Published by
RIEDEL Communications GmbH & Co. KG
Uellendahler Str. 353
42109 Wuppertal
Germany
www.riedel.net
Editorial Director: Julian Bühlhoff
Contact: julian.buelhoff@riedel.net

© 2025 RIEDEL Communications GmbH & Co. KG.
All rights reserved. Windows is a registered trademark of Microsoft Corporation. All trademarks are the property of their respective owners. Product specifications are subject to change without notice. This material is provided for information purposes only; RIEDEL assumes no liability related to its use. September 2025.

SMALL FORM FACTOR BIG IMPACT

NEW HYBRID PROCESSING PLATFORM

UNITING THE WORLDS OF SDI & IP

MEDIORNET HORIZON



Hybrid infrastructures have never been easier to achieve. As a highly dense **IP gateway** and **processing** solution, Horizon combines the simplicity of SDI with the interoperability of **ST 2110** and provides powerful **UHD** video processing such as **SDR/HDR** conversion, **UDX** conversion and **color correction**. Thanks to a flexible application concept, Horizon scales with your needs and is an indispensable appliance for any state-of-the-art video infrastructure.



SDI/TDM



HYBRID



IP



TUNED FOR THE FUTURE DAEGU CONCERT HOUSE UPGRADES TO SMART RIEDEL INTERCOM

■ South Korea's Daegu Concert House has long been celebrated as a crown jewel of performing arts, hosting world-class orchestras, operas, and theatrical productions. With its striking architecture and exceptional acoustics, this prestigious 1,500-seat venue has been a cornerstone of the country's artistic scene since its opening in 1975. Yet behind the curtain, technical teams grappled with aging communication infrastructure that couldn't keep pace with modern production demands.

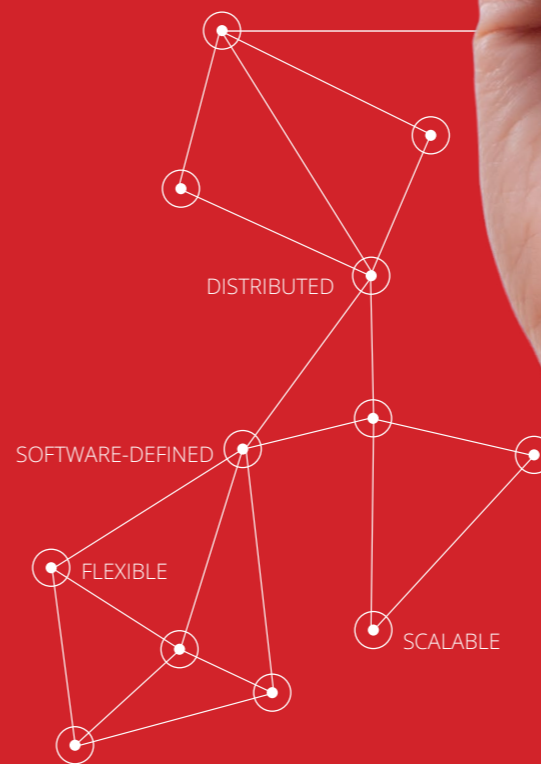
The turning point came in 2023 when technical staff attended KOSOUND, South Korea's premier audio engineering expo. There, they discovered Riedel's cutting-edge intercom technology. After months of testing and training sessions with local distributor Dasan SR, the venue embarked on a complete infrastructure overhaul, completed on Oct. 8, 2024.

The new system combines Riedel's Artist-1024 digital matrix with 10 Bolero belt packs and eight antenna units strategically placed throughout the complex. This all-IP solution offers unparalleled density and flexibility, supporting up to 1024 ports. Complementing this are two RSP-2318 and four DSP-2312 SmartPanels, providing intuitive user interfaces via high-resolution, multitouch color displays. The technology is easy to configure and troubleshoot in real-time, offering superior audio quality and reliability.

What sets this installation apart is its intelligent design: Crew members can move freely between the venue's Grand Hall and Chamber Hall without manually reconfiguring equipment. Dasan SR created multiple virtual Bolero presets for each belt pack, allowing the system to automatically detect which space a user enters and connect them to the appropriate antenna network.

Technical teams particularly praise the Bolero system's robust performance in crowded environments. Where previous systems might have faltered during peak attendance, the new wireless intercoms maintain crystal-clear audio even in the presence of large crowds. The system's extended antenna coverage and longer battery life outperform those of alternative solutions while eliminating the need for additional hardware such as transceiver splitters.

By embracing Riedel's IP-based technology, this South Korean landmark has future-proofed its operations while honoring its commitment to artistic excellence. Now, the team can focus on delivering high-quality performances without worrying about its previous coverage and performance issues. As international performers increasingly demand cutting-edge infrastructure, the Daegu Concert House's tech upgrade ensures it remains competitive on the global stage while delivering unforgettable experiences for local audiences. This beloved venue is poised to enter a new era of artistic excellence - with crystal-clear communication now powering every performance.



MEDIORNET TO THE RESCUE

HOW REC4BOX RESTORED
A BROADCASTER'S OPERATIONS IN DAYS

■ After experiencing issues with its previous intercom solution and traditional large SDI router for video infrastructure, outside broadcast (OB) solutions provider Rec4Box implemented Riedel's MediorNet real-time network technology across its fleet of midsize OB trucks. By integrating video, audio, and intercom systems into a unified network running on just a few fiber strands, Riedel's MediorNet system and its MicroN interfaces have allowed Rec4Box to make more efficient use of limited truck space and simplify on-site management - thereby streamlining on-site infrastructure. This deployment not only transformed Rec4Box's production capabilities, but it also enabled Rec4Box to swiftly restore operations for a major Canadian broadcaster following a catastrophic flood.

Rec4Box integrated multiple MediorNet frames and MicroN devices into its operations. One of the main reasons why was MediorNet's built-in redundancy, which proved essential for high-stakes live productions where technical failures are never an option. Instead of a single large router inside the truck, the MediorNet network operates like a distributed spider network with point-to-point connectivity, allowing for a much simpler and more efficient setup.

Rec4Box's Riedel ecosystem includes 16 MicroN units for distribution across any venue, along with Riedel's MediorNet Compact Stagebox, the RockNet audio distribution network, and the Bolero wireless intercom. The company distributes Riedel Artist G2 frames with numerous panels and 40 Bolero belt packs across two 26-foot trucks, one 40-foot truck, and two complete flypacks. Because of the MediorNet network's built-in redundancy, the Rec4Box team can prioritize critical signals and add more fiber cables for increased backup options. The ability to decentralize routing capabilities has become particularly beneficial for mobile productions.

Thanks to MicroN's user-friendly interface and plug-and-play nature, new engineers can operate the system after a 20-minute lesson. Extensive preconfiguration and saved settings allow for rapid deployment and integration of new units into the network.

The versatility and reliability of Riedel's MediorNet system were put to the test when a major Canadian broadcaster faced a severe flood that threatened to halt its operations and forced a complete move within 24 hours. Using the broadcaster's existing fiber infrastructure and expertise, Rec4Box implemented Riedel's MediorNet technology in less than three days, quickly creating a distributed network architecture that was ideal for the broadcaster's multiroom setup. The system's exceptional flexibility and robustness in emergency situations meant the broadcaster could relocate, get its entire production center up and running, and resume operations quickly. Rec4Box later lent the broadcaster two MicroN units, which it used for about three weeks. After seeing the benefits of MediorNet, the broadcaster purchased and installed its own MediorNet media distribution solution.

MicroN has become Rec4Box's secret weapon. Whether for a small local event or a large-scale broadcast, the system's flexibility allows the company to adapt quickly to different production requirements. MicroN has dramatically reduced setup time and increased operational efficiency so that Rec4Box can now arrive on site, set up eight cameras, lay a single fiber, and be ready to shoot in record time. The cost savings over numerous productions throughout the year are substantial. With MicroN's software-defined nature, Rec4Box can reconfigure its setup on the fly, eliminating the need for multiple specialized devices and significantly reducing its equipment footprint.



I'M AN ARTIST

■ Behind every live event, every broadcast, there is an intricate symphony of talent working tirelessly behind the scenes. In a way, every production is a work of art – crafted through the dedication, skill, and collaboration of countless individuals. The „I'm an Artist“ campaign was born from this idea: to celebrate those who transform technical precision into creative expression. Whether it's a director calling the shots, a lighting designer crafting the perfect atmosphere, or a camera operator capturing the action from the perfect angle – everybody plays a vital role in bringing artistic vision to life.

Today, we shine a light on one of these artists: Toni Modrow, a skilled camera operator whose keen eye and steady hands shape the way stories are told. In our interview, Toni shares insights into her craft, the challenges of working in TV production, and how communication technology helps turn small details into big visions.

Tell us a bit about yourself and your work as a camera operator.

My name is Antonia Modrow, but everyone in the industry calls me Toni. As a camera operator for 24/25 TV & Medienproduktion based in Cologne, I've been doing large international TV productions for about four years. I primarily work on Warner productions, including shows for Amazon Prime and Netflix. Last year, I was part of Too Hot to Handle on Netflix, but I also did lots of The Bachelor, The Bachelorette, and Kitchen Impossible productions. An exciting new development for me is that I will soon be working as a DOP (Director of Photography) on a new project. As DOP, I will be responsible for the entire camera department and determine the visual language and style of the production.

What is the most exciting thing about your job? And how did you get into it?

The most exciting part for me is the traveling. I initially studied communication design to pursue a career as a designer but soon realized that desk work isn't really for me. Since I've always loved photography, I eventually returned to working with cameras. After completing my studies in audio visual media design, I started as a material assistant at 24/25 and slowly worked my way up to become a camera operator.

Camera operators need both technical understanding and an artistic eye. Where do you personally see your strengths?

I'm not a hardcore techie – for me, technology is mostly a tool that helps me focus on the art. My true strength lies in my eye for aesthetics, in finding and capturing beautiful images. So, without a doubt, my role leans much more toward the creative side.

How important is communication for you on set?

Efficient communication is absolutely essential, which is why the Riedel system has become a core part of our workflow. We often work in a team of 7–8 camera operators who need to stay perfectly in sync without disrupting others

in the confined space of a set. Our first channel is typically reserved for the director, who oversees all our shots from the control room and essentially „conducts“ us. But Bolero goes way beyond that – it provides flexible one-on-one communication and dedicated party lines, enabling seamless coordination across teams.

Tell us more about your communications setup.

I primarily work with Bolero – usually integrated into an Artist intercom network. But I personally don't interact much with Artist itself. I'm simply handed a Bolero, configure my channels with the team, and get to work. As a creative, it's easy to forget that behind the scenes, there's a complex Artist ecosystem enabling countless advanced features and functions – because Bolero is just so intuitive and easy to use!

That's how we like it: technology that is powerful in the background but does not distract from the creative process. What do you think are the main differences between Riedel intercom and other communications systems?

Before, I only used to work with traditional radio systems. But since Bolero entered the scene, those have become rather unappealing – the competition over who gets a Bolero and who must settle for a traditional walkie-talkie has become something of a running gag on certain sets. On mobile radio, you can only talk or listen to a single channel – if you switch, you miss other conversations. And don't get me started on their inferior audio quality... With Bolero, I can move freely and always have a crisp and clear connection, even over long distances.

What's your favorite thing about Bolero?

Well, the integrated bottle opener is always a big hit on our productions (laughs). But seriously, my favorite feature might be Bolero's Bluetooth support for my AirPods. I'm also constantly impressed by the system's durability and reliability. We've never had a major issue – it just works flawlessly, even in

the toughest conditions. Bolero can take any beating, and it held up for six weeks straight in heat, humidity, and sand without a hitch. And then there's the incredible audio quality – you hear people as if they were standing right next to you. The high fidelity isn't just great for speech intelligibility; sometimes our colleagues play music on channel six for a little entertainment while working, which is always a nice touch.

TV productions can often be a bit unpredictable. Was there a situation where Bolero helped you respond to an unexpected change?

Yes! We once had a shoot on a beach at night when suddenly, hundreds of baby sea turtles swarmed the set – we had to clear the beach immediately to avoid disturbing them. Thanks to Bolero, we were able to instantly alert all teams at once, ensuring a quick and coordinated response. Within moments, everyone was in action, making sure the turtles remained safe.

Do you have any tips for aspiring camera operators, or female camera operators?

Communication is key – and I don't just mean intercom. Stay professional, direct, and keep your tone friendly, even under pressure... and most importantly, keep going. Perseverance is everything on set. I've seen many talented women come and go, sometimes leaving before they had the chance to truly shine. It can be tough, but if you stick with it, you'll eventually get to where you want to be. It's all about pushing through and not giving up.

How do you think communication on set will change in the future?

In the past, teams on set were used to just having two open radio channels. But over the past years, professional intercom has entered the equation. I believe that – as today's production teams are expected to do more with less – powerful intercom systems will keep gaining momentum in the TV and film industry. It sure is hard to go back to mobile radios after experiencing Bolero on set.



CHASING THE AULD MUG

HOW RIEDEL COMMS FOR THE LOUIS VUITTON 37TH AMERICA'S CUP ARE CHANGING SAILING FOREVER

■ In a landmark development for maritime sports broadcasting, Riedel has implemented a fully IP-based communications system for the Louis Vuitton 37th America's Cup in Barcelona. This cutting-edge solution enables chase boats to receive real-time audio directly from competing yachts, revolutionizing sailing coverage.

Traditionally, chase boat communication during races has been limited, relying on delayed or indirect information. Riedel's innovative system transforms this paradigm by facilitating instantaneous audio transmission from racing yachts. This advancement enhances tactical coordination while delivering a more immersive spectator experience.



„Riedel's innovative IP-based communication system represents a significant leap forward in how we manage and produce this iconic event. The technology not only enhances the viewer experience – bringing fans closer than ever by allowing every sailor's voice to be heard on the broadcast – but also significantly improves operational efficiency and safety on the water. This comprehensive solution helped us achieve our goal of making the America's Cup one of the most technologically advanced sailing competitions in the world.“

Stephen Nuttall
Head of Television
for the 37th America's



From the sailors' microphones to the final output, Riedel's digital signal chain ensured unparalleled audio quality and system flexibility. The setup included 24 rugged, saltwater-proof comms cases for AC75 and AC40 yachts and chase boats, accessible via 5G/LTE for full remote support even when at sea. While providing Bolero wireless intercom benefits to the crew, the kits also connected to the shore and chase boats, enabling seamless on-air sailor-coach interviews. Additionally, the crew used 72 waterproof Bolero belt packs with custom headsets integrated into sailing

helmets, allowing for hands-free operation in extreme conditions. Onshore, 70 Riedel SmartPanels and an Artist-1024 matrix facilitated seamless communication across the event, supported by 280+ TETRA radios and a VHF commentary installation.

Riedel's system sets a new standard for sailing communication. By enabling direct, real-time audio links between yachts and support vessels, teams can make more informed decisions, respond swiftly to changing conditions, and enhance performance. The

fully IP-based infrastructure ensures seamless integration, scalability, and high-quality, low-latency audio transmission – critical for real-time decision-making in competitive sailing.



„The introduction of direct, real-time, high-quality audio communications between chase boats and race yachts represents a major advancement in how production teams capture the intensity and strategy of America's Cup racing. We're proud to provide leading-edge technology for this prestigious competition and play a crucial role in bringing the action to audiences worldwide with unprecedented immediacy.“

Jeff Strössner
Director Business Development
Managed Technology,
Riedel Communications



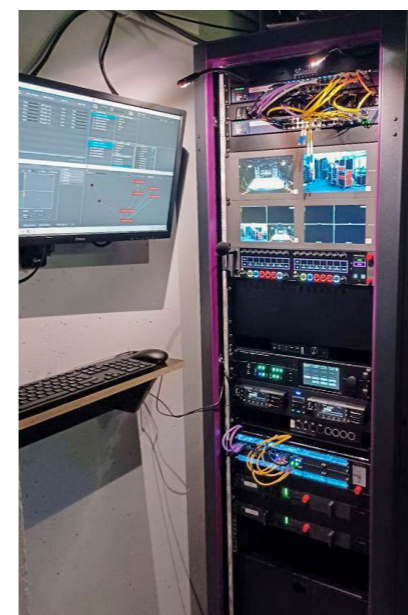
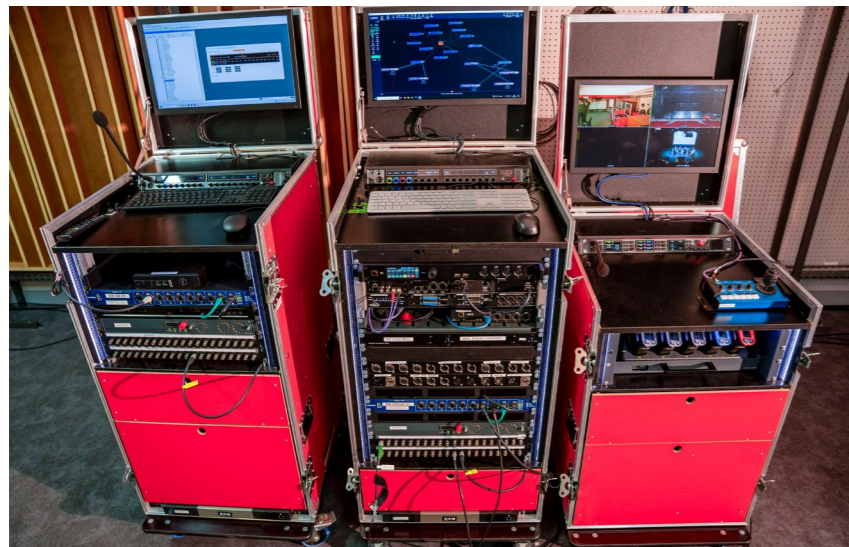


GRANDE HALLE DE LA VILLETTE PAIRS

HISTORIC CHARM WITH CUTTING-EDGE TECH

■ Grande Halle de la Villette (EPPGHV), located in Paris's 19th arrondissement, stands as a testament to architectural reinvention and cultural vibrancy. Once a 19th-century slaughterhouse, this iron-and-glass marvel has transformed into a versatile venue hosting an eclectic array of events, from avant-garde festivals and concerts to global conferences and exhibitions. However, the venue needed an AV infrastructure that could keep pace with the demands of today's high-stakes events.

Before 2022, EPPGHV's communication and signal distribution systems were a fragmented patchwork, relying heavily on rented gear for intercoms and lacking a unified video network. The constant juggling of rentals ate into budgets and time, and the venue's six flexible scenographies – spaces that needed to be reconfigured for each event – required a level of agility that the existing infrastructure simply couldn't deliver. This limitation became particularly apparent during preparations for large-scale productions, where delayed setup times and signal bottlenecks threatened to derail events.



The turning point came in 2019 when EPPGHV first experimented with Riedel's ecosystem, renting Bolero wireless intercom systems. Impressed by its reliability and performance, the venue embarked on a full infrastructure overhaul in 2022. This ambitious project saw the deployment of Riedel's Artist-1024 intercom and MediorNet real-time media network, a combination that would transform operations at the Grande Halle.

At the heart of this new setup is the Artist-1024 intercom system, serving as the backbone of the venue's communication network. Integrated with Bolero wireless belt packs and 1200/2300 Series SmartPanels, it enables seamless coordination across teams, from stagehands to broadcast crews. The MediorNet distributed network, utilizing MicroN UHD devices for video routing and mobile racks connected via fiber and IP networks, provides the flexibility to scale from intimate talks to arena-sized shows in a matter of hours.

One of the key innovations driving this success is the smart control system. Using the MediorNet Control App, technicians can recall pre-set configurations, or „snapshots,“ from RSP-2318 SmartPanels stationed across the venue. This capability, combined with the use of partial files and automation logic, has dramatically reduced setup times – a critical feature for venues hosting back-to-back events with diverse technical requirements.

The agility of this new system was put to the test during the 2024 Paris Games, where EPPGHV hosted the „French Club,“ a hybrid space demanding broadcast-grade signal distribution. The Riedel system rose to the challenge, seamlessly routing feeds to external partners while managing internal communications, proving that it could meet professional broadcast specifications in a non-traditional space.

Today, this blend of historical grandeur and Riedel's modular technology proves that even spaces with 150 years of history can lead the AV revolution. From tangled cables to fiber-optic fluidity, EPPGHV now operates with unprecedented efficiency and flexibility, redefining what's possible in the world of event production and cultural experiences.



A NEW HUB FOR INNOVATION

RIEDEL OPENS OFFICE IN THE HEART OF HONG KONG

■ **Nestled in Hong Kong's vibrant Soho district, the new Riedel Hong Kong office in the Kinwick Centre ensures seamless access to the heart of the city's business and entertainment hubs, fostering collaboration and connectivity.**

The office is designed to serve as a dynamic hub for Riedel's operations in the region. Spanning 255m², the facility includes a modern workspace, a fully equipped meeting room, as well as a state-of-the-art demo and training room. This ensures that Riedel's partners and customers can experience the latest advancements in real-time video, audio, data, and communications networks first-hand, while also receiving in-depth training and technical support.

With its new Hong Kong office, Riedel is bringing its world-class training and support services closer to its customers in Asia. The facility will host comprehensive training programs on Riedel's full portfolio of innovative intercom, media infrastructure, and live video production solutions. These hands-on training sessions will empower Riedel users across Asia, ensuring that they can maximize the potential of their Riedel systems and stay ahead of industry advancements.

CELEBRATING GROWTH: THE ALL ASIA PARTNER CONFERENCE

To mark this significant expansion, Riedel hosted the All Asia Partner Conference from March 4-6 at the new Hong Kong office. This special gathering brought together regional partners to celebrate the office's opening and exchange insights on regional market trends, product updates, and partner support tools. The conference served as a collaborative platform for networking, strengthening relationships, and exploring the future of broadcast, event production, and live entertainment technologies. Partners had the opportunity to engage with Riedel's latest solutions, discuss best practices, and strategize on future growth opportunities.

STRENGTHENING RIEDEL'S COMMITMENT TO ASIA

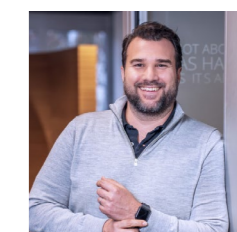
The establishment of the Hong Kong office is part of Riedel's broader investment in the Asia-Pacific region, joining its existing offices in Beijing, Sydney, and Tokyo. This expansion highlights the company's commitment to providing tailored solutions and localized support that cater to the specific needs of its regional customers.

With this new hub, Riedel is poised to take its customer engagement, training programs, and technical support in Asia to the next level, ensuring that partners and clients continue to experience the best in real-time communications and media network solutions.



"We are excited to further solidify our commitment to the Asia-Pacific market with the opening of our new office in Hong Kong. This strategic move will allow us to better serve our customers, provide localized support, and drive growth through innovative solutions that meet the evolving demands of the market."

Guillaume Mauffrey, Director Sales Asia, Riedel Communications.

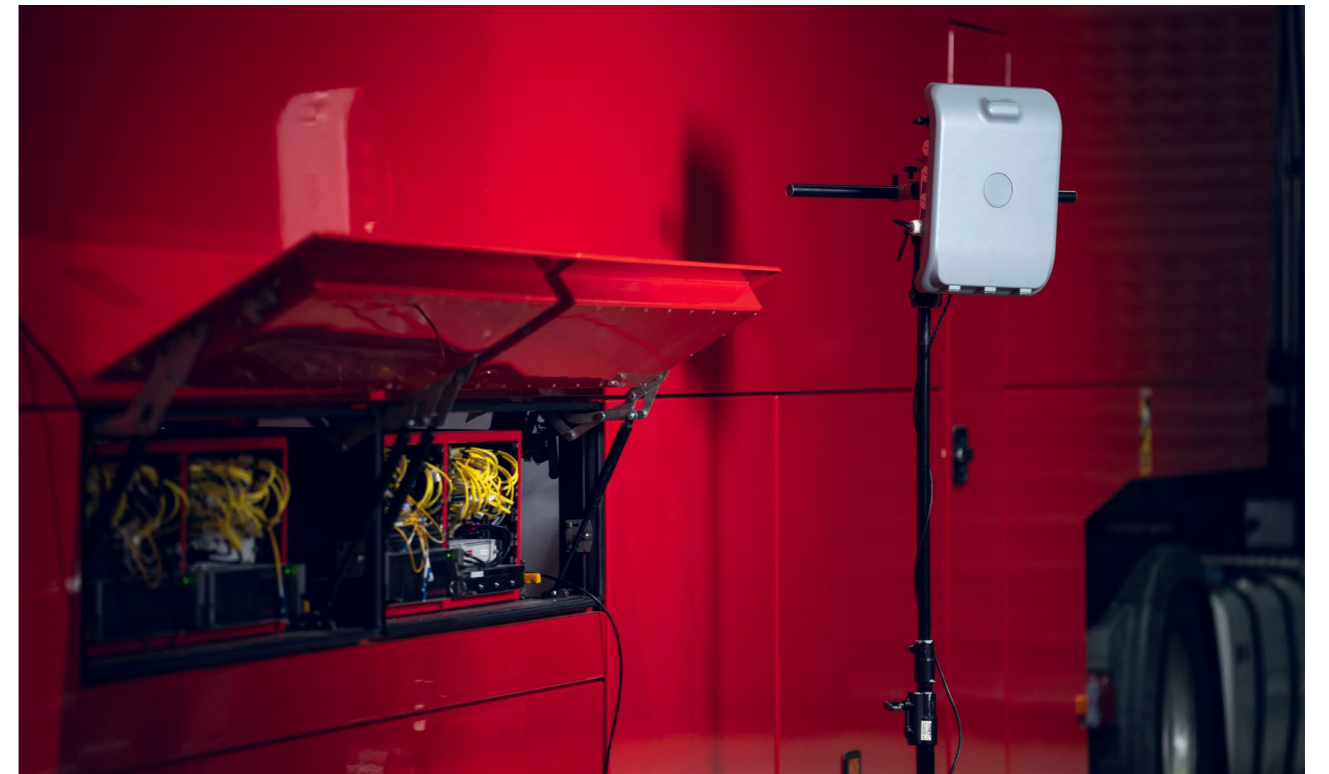




NEW PERSPECTIVES & NEXT-GEN CONNECTIVITY

EASY5G™ & REFCAM®

■ In an era where audiences demand deeper engagement and immersive storytelling, Riedel remains at the forefront of innovation with two groundbreaking technologies: Easy5G™ and RefCam®. These solutions are transforming live sports, events, and industrial environments by delivering high-performance connectivity and unprecedented point-of-view perspectives. Together, they will open up new possibilities for real-time, immersive content delivery.



EASY5G

CARRIER-GRADE CONNECTIVITY WITH WIFI SIMPLICITY

Imagine deploying a Private 5G network as effortlessly as setting up a WiFi router. Riedel's Easy5G is revolutionizing Private 5G networks by making them more accessible, efficient, and manageable for organizations across industries. Designed to meet the demands of broadcasters, event organizers, and industrial environments, Easy5G provides carrier-grade reliability without requiring extensive technical expertise.

Gone are the days when Private 5G networks demanded highly specialized infrastructure. With an intuitive plug-and-play setup,

Easy5G can be operational in under 60 minutes – no need for dark fiber or 5G specialists. It operates on dedicated frequencies, ensuring superior reliability compared to public networks, particularly in high-density environments like stadiums or large festivals. Additionally, configurable uplink/downlink ratios allow for prioritizing uploads, making it perfect for applications like live video transmission.

DEPLOY EVERYWHERE, PERFORM ANYWHERE: APPLICATIONS ACROSS INDUSTRIES

 Fixed	 Temporary	 Industry & Corporate	 Racing Sports
For fixed networks, such as at concert halls, convention centers, stadiums or broadcaster compounds, Easy5G provides expansive area coverage with minimal infrastructure. eSIM support allows for easy provisioning of large numbers of users.	Riedel offers full service for temporary deployments of Easy5G. It can link to existing wired network backbone solutions, e.g. at festivals or multisport events for various applications.	Easy5G is already in use in various industrial and corporate environments, efficiently and safely connecting workers and machines. Easy5G networks can be adapted to specific requirements in many dimensions, e.g. via up-/downlink ratio or network slicing.	With advanced handover mechanisms and beamforming technologies, Easy5G maintains stable connections during high-speed mobility, making it ideal for applications like on-board video transmission in racing or maritime environments.



REFCAM

BRINGING AUDIENCES CLOSER TO THE ACTION

Sports fans no longer want to just watch the game – they want to see it through the eyes of those in the action. Riedel's RefCam is a breakthrough POV camera system designed to immerse audiences like never before. By placing a lightweight, high-definition camera on referees, it offers a real-time, first-person perspective that transforms the way sports are broadcasted.

RefCam is available in two models: RefCam Live, a 5G-enabled version that streams high-definition video in real time while recording locally for redundancy, and RefCam Record, a non-streaming version that records locally in high-quality formats.

RefCam Live Beltpack



RefCam Record Beltpack



RefCam original size

KEY FEATURES

- Live HD video streaming via Easy5G
- Electronic image stabilization for smooth footage
- Live video preview for easy setup
- Ultra-light 14g head-mounted camera for maximum comfort
- Integrated microphone (optional audio capture)
- Seamless integration with Bolero intercom systems
- Compact, ergonomic beltpack for complete mobility

A PERFECT MATCH

REFCAM AND EASY5G

While Easy5G delivers the connectivity, RefCam delivers the experience. For productions requiring high-quality, low-latency transmission, Riedel's Managed Technology division can deliver turnkey Easy5G-RefCam solutions.

RefCam is already making an impact across various sports, including soccer, combat sports, and skiing. Developed in cooperation with Bundesliga referees, it's designed to enhance performance without interfering with officiating duties. With its unobtrusive design, intuitive controls, and superior connectivity via Easy5G, RefCam provides an all-in-one solution for immersive sports broadcasting.

By eliminating connectivity barriers and delivering new perspectives, Easy5G and RefCam can truly transform live productions. Whether it's bringing fans closer to the referee's split-second decisions or ensuring seamless, high-speed connectivity for major productions, these technologies redefine what's possible in live broadcasting.

With Riedel's Easy5G and RefCam, the future of immersive storytelling is here – and it's more powerful than ever.



LEIPZIG OPERA

CUE THE FUTURE

LEIPZIG OPERA UPGRADES TO
NEXT-LEVEL SIGNAL AND COMMS
INFRASTRUCTURE

■ The Leipzig Opera, one of Germany's largest and most renowned opera houses, has taken a major step into the future with a state-of-the-art upgrade to its communication and signal distribution systems. By integrating Riedel's MediorNet real-time media network, Artist intercom platform, and Bolero wireless intercom system, the opera house is now equipped with seamless, real-time communication and maximum flexibility - both essential for producing world-class performances.



At the core of this transformation is the new Aduart stage management system, which works hand in hand with Riedel's technology. Designed for efficiency, it offers intuitive, centralized control over all stage processes. With multiple consoles, dozens of info displays, over a hundred light signs, and hundreds of IP loudspeakers, the entire operation has become more streamlined and responsive.

A key component of the upgrade is the MediorNet fiber-optic network, which acts as the backbone for Leipzig Opera's newly revamped video system. The system now includes 19 PTZ cameras, and MediorNet MicroN UHD ensures that all video and control signals are transmitted in real time with virtually zero latency. This is particularly crucial for the conductor monitors, where even the slightest delay could disrupt a performance. MediorNet also enables seamless de-embedding and embedding of audio signals,

as well as multiviewing capabilities. Thanks to its integration via NMOS and Ember+, video signals can be managed directly from the stage management touchscreens, simplifying workflows even further.

Communication, the backbone of any live production, has also received a major boost. The Artist intercom system, combined with Bolero wireless technology, now ensures crystal-clear communication across the entire venue. With dozens of SmartPanels, wireless belt packs, and strategically placed antennas, coordination between cast, crew, and technical teams is smoother than ever. Additionally, the integration of AES67, MADI, and Dante protocols within Riedel's Artist-1024 matrix allows for precise audio routing.

INTERCOM

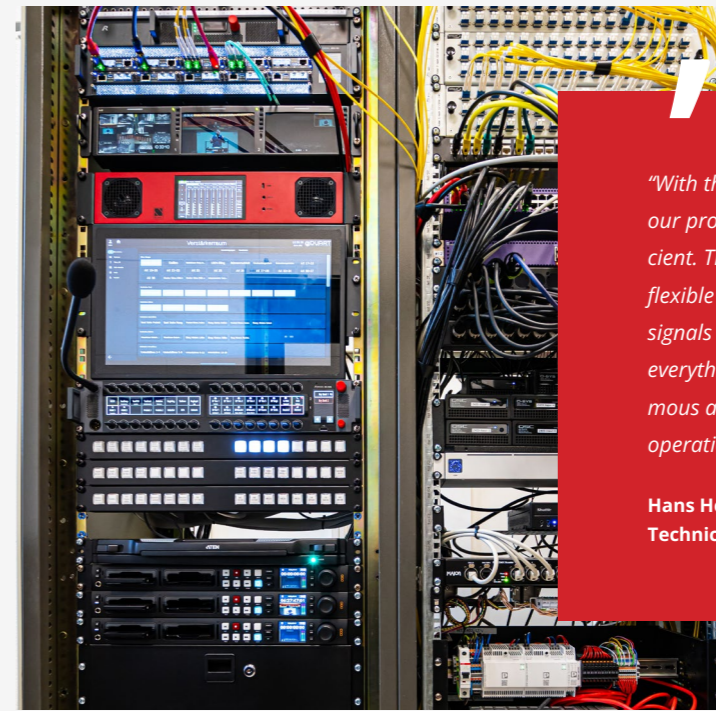
- 1 Artist-1024
- 31 SmartPanels
- 42 Bolero Belt packs
- 20 Bolero Antennas

STAGE MANAGEMENT & VIDEO SYSTEM

- 2 main consoles
- 1 mobile console
- 10 MediorNet MicroN UHD
- 19 PTZ cameras
- 28 info displays
- 112 light signs
- 435 IP loudspeakers

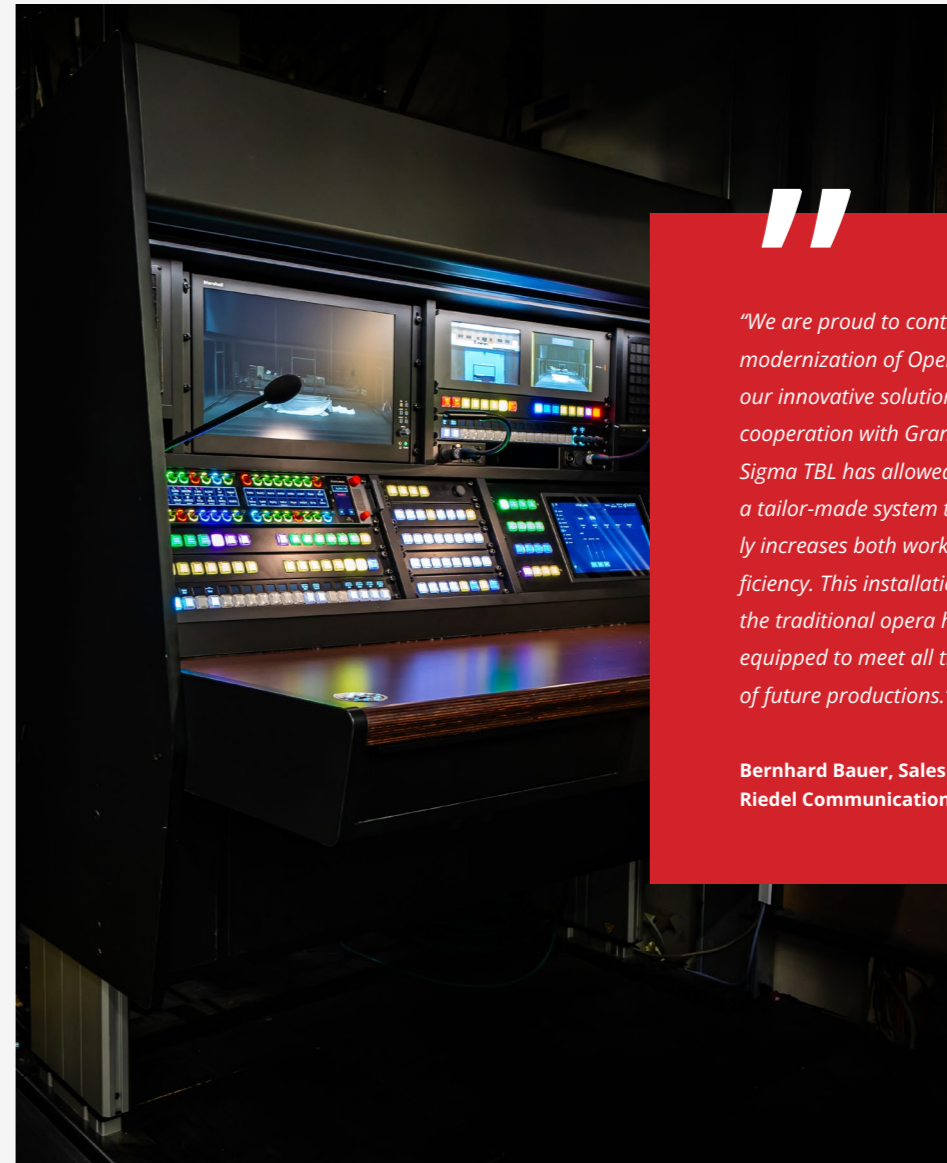


Leipzig Opera



"With the new Riedel infrastructure, our processes are much more efficient. The seamless communication, flexible routing of audio and video signals and the ability to control everything in real time offer enormous advantages in our day-to-day operations."

Hans Hermann Hönsch, AV Network Technician, Leipzig Opera



"We are proud to contribute to the modernization of Oper Leipzig with our innovative solutions. The close cooperation with Graner+Partner and Sigma TBL has allowed us to develop a tailor-made system that significantly increases both work safety and efficiency. This installation ensures that the traditional opera house is ideally equipped to meet all the challenges of future productions."

Bernhard Bauer, Sales Manager, Riedel Communications

RIEDEL AMERICAS FOSTERING GROWTH FROM WITHIN

■ At Riedel, our company culture is built around passionate self-starters who work humbly and tirelessly to get things done. We value team players who elevate the group, and as such, we are committed to promoting from within. We strive to create opportunities and pathways for our internal teammates to take on new responsibilities and roles, ensuring a stronger team with deep roots of knowledge.

This commitment to growth can be seen through the journeys of team members like Kim Leidholdt, Josh Harrison, and Tommy Bridwell. Each of them started in different roles and, through dedication and hard work, have risen to new challenges within the company.



Kim Leidholdt

Inside Sales Manager

Kim began her journey at Riedel in 2017 as a Sales Administrator and has since transitioned to her current role as Inside Sales Manager, a testament to her growth and contributions to the team.



Josh Harrison

Regional Sales Manager

Josh began his journey with Riedel as an intern while studying at Azusa Pacific University. In 2019, he officially joined the company as a Service and Support Engineer before transitioning to a System Consultant role in 2022. Now, in 2025, Josh has moved to Texas and embraced his new role as Regional Sales Manager, drawing on his diverse experience to serve customers in a whole new capacity.



Tommy Bridwell

System Consultant

Tommy started with Riedel in 2021 as a Service and Support Engineer. He quickly worked his way up, first as a Project Engineer and then as a Senior Project Engineer. As of March 2025, Tommy has transitioned to a System Consultant, where he will work closely with the sales team to design innovative solutions that enhance efficiency and scalability.

We pride ourselves on creating an environment where passion, dedication, and initiative lead to real opportunities for growth and success. The journeys of Kim, Josh, and Tommy exemplify our commitment to fostering talent and building a strong, knowledgeable team.



EXPANDING RIEDEL'S PRESENCE IN THE CALA REGION

Jason Barden, our new Director of Sales for Latin America and the Caribbean (CALA), is on a mission to grow the company's footprint in the region. With a wealth of experience in live video production from his time at Ross Video, Jason is focused on raising awareness of Riedel's high-quality and reliable solutions.



Since joining Riedel last October, Jason has been working to expand channels, forge strong partnerships, and deliver innovative solutions to customers across the CALA region. He will collaborate closely with Matt Bain, Riedel's new Channel Manager, to build a robust partner network in Latin America. Matt, who joined Riedel in June 2024 from Diversified, brings valuable insight from his partner experience, which will be instrumental in helping Riedel's partners thrive. Meanwhile, Matt will focus on managing the entire partner portfolio across the Americas. Both Matt and Jason are excited to collaborate with Riedel's talented team to continue growing the company's presence in CALA as well as the entire Americas region.

PINO BARILE'S VISION FOR SIMPLYLIVE

Pino Barile, Regional Sales Director West at Riedel Americas is playing a crucial role in driving the growth of SimplyLive, Riedel's innovative live video production solution. Since joining Riedel in July 2024 from Vizrt, Pino has brought his deep expertise in live production to the team, recognizing the immense potential of SimplyLive in transforming the way content is created and broadcast. He's taken on the responsibility of not just increasing the product's reach but also building a dedicated team to champion it.



Pino is focused on raising SimplyLive's visibility by creating impactful professional training programs, targeted campaigns, and driving the product into the Americas spotlight. With his experience and belief in the product's capabilities, he's dedicated to ensuring that SimplyLive becomes the go-to solution for broadcasters and content creators seeking a user-friendly, scalable platform that enhances both efficiency and creativity.

At Riedel, the mission is clear: to revolutionize live production through cutting-edge technology and exceptional solutions. Pino's efforts are aligned with this commitment, and he's excited to be part of a team that is not just keeping up with industry changes, but leading them. By focusing on the evolving needs of the industry and delivering smart, flexible solutions, Pino is helping SimplyLive set new standards for live production – whether on-prem, in the cloud, or a combination of both. With Pino at the helm of SimplyLive's growth in the Americas, the future is bright, and with Riedel's SimplyLive, it's simply smarter.



by
Joyce Bente
CEO/President, Riedel Americas

BROUGHT BEFORE THE STEWARDS

RACING VICTORIA ENLISTS RIEDEL'S SIMPLYLIVE

Published by

content+
technology

■ With some 510 fixtures per year, Racing Victoria has been leading the field in outside broadcasts through its OB arm, Thoroughbred Racing Productions (TRP), but this is only half the story for the venerable sporting body that oversees the iconic Melbourne Cup. In order to ensure the integrity of its meetings, Racing Victoria also employs a small army of Stewards tasked with ensuring the conduct of each event on the calendar is safe and above board.

According to Stephen Dole, General Manager - Projects and Media Integration at Racing Victoria, "Every race, whether it's the Melbourne Cup or the Echuca Cup or even a maiden at Echuca, we'll make sure that there's stewards in attendance and that race is watched and videoed. So, even though the stewards will go out into the towers and view the race and view what the jockeys are doing, not all of that can always be obvious to the naked eye up in the stewards' towers. So, straight after the race, they'll come back into the stewards' room and they'll go and bring it up on the screens, and they'll shuffle back and forth through the race and view it like any sort of VAR that you see in sports around the world at the moment."

Against the backdrop of an aging, bandwidth-inefficient review system, Racing Victoria engaged Chris Law, Managing Director of Surge Productions, to implement a rack-mountable system more suited to the TRP fleet with improved video compression to bring back higher quality vision back across its media data network back to Racing Victoria's headquarters at 400 Epsom Road, Flemington. The vision also had to be suitable for archiving.

"We had to assess not only the current delivery of what was happening," says Law, "we had to assess the steward requirements to understand exactly what they wanted, what they've had, but what they wanted going forward."

After considering alternatives, Law's team settled on Riedel's SimplyLive Production Suite, a software-driven live production platform running on a common backend using commodity hardware. Compatible with SDI, NDI, etc., it can also be migrated to IP and cloud environments. A range of application layers are available, including slow motion

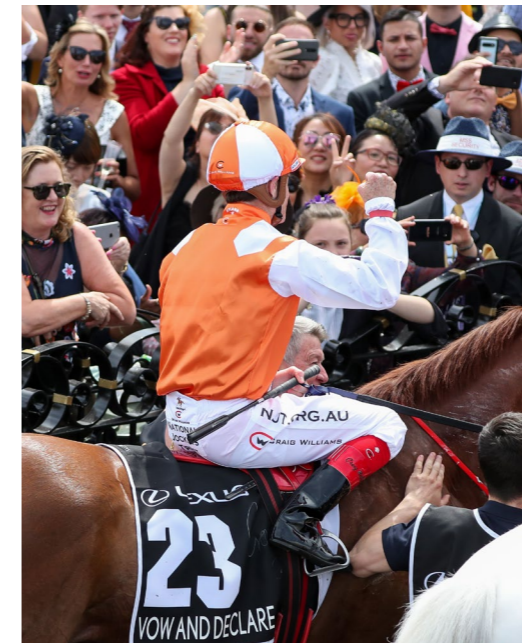
replay, master recording, streaming or referee review to an All-in-One production solution.

According to Chris Johnson, Director Oceania with Riedel Communications, "The Race Victoria system uses the RefBox application of our SimplyLive Production Suite. So this is taking those standard video workflows and designing them for use by non-technical users in a review type scenario. Architecturally, the concept is that there are servers that live close to the video sources, they ingest all the sources, and then there are users connected to those servers, and we can customise the UI for those users depending on the workflow they're working on. RefBox is just one of the applications that can run on the system. It could, in fact, run some kind of backup live production switching system, and could also handle some broadcast replay workflows. And, as seen in this system, is really built to be compatible with today's kind of remote production workflows."

Another advantage of the SimplyLive system is it also integrates into TRP's Riedel-based comms system and MediorNet signal distribution architecture.

As Chris Law explains: "What we looked at first was just how we could use the existing infrastructure to get the signals back in low latency, broadcast quality, and also the return path was crucial given the DVN2 video circuit is the signal path of delivery. Telstra were great. They came on board with that. We have upgraded 26 tracks to 100 meg. That's allowed us to get up to 12 cameras back in individual broadcast-quality streams. The SimplyLive system we brought not only works between OB truck and the remote bunker, but also lets us archive back at Racing Vic Headquarters. It's made the stewards more independent and not reliant on TRP for a lot of the fault finding. Because of the user interface that the Riedel team have customised for the system, the stewards can operate this without too much technical know-how. They're able to use their own jog shuttle, use their own clips and infractions and things they can clip up and cue points on their own machine at Racing Victoria. And the guys at the stewards' room on-course can do the same, but yet they're appearing on both machines so that they are a little bit more interactive than what they have been previously."

"We also have communication now between the stewards' room on-course and the remote bunker. We've increased that significantly. Previously, they were using Microsoft Teams, which was, as you'd imagine, sort of dropping out, audio at times. And, I think, we've been able to make them feel like they are part of the room."



“

„The stewards were relying on the vision coming back from TRP, but sometimes that could be up to a couple of days by the time the van gets back from, say, Ballarat back to the warehouse and then uploaded in the system and sent across to Racing Victoria. There could be an inquiry that's been held up by a couple of days, just purely based on the fact that they can't review the system. The stewards vision, the individual streams of all the stewards' cameras, is now ingested by the SimplyLive units, and that'll just sit on a 20-terabyte hard drive in the commons room at Racing Victoria headquarters.“

„What we have done as well, thanks to Riedel, is set up an independent SimplyLive system in the inquiry room so the archive vision could be brought in in real time. The archive can be dragged in at any time, so people can view it and treat it as a live review. I'm hoping by this time next year, that we've got a number of our race meetings that we can do remotely with race calling, and that we improve that whole workflow to give more flexibility, even around the officiating of the meeting with the stewards and help them with their workflows. Also, if you start looking at the editorial benefits that Racing.com can get from this, too. We're bringing back 12 cameras which we could pass onto them quite easily, which they can use for their own edits, rather than relying on the TRP team, who are there to do a world feed predominantly. So yeah, it's been a terrific exercise and one that we're extremely grateful for.“

Chris Law, Managing Director of Surge Productions

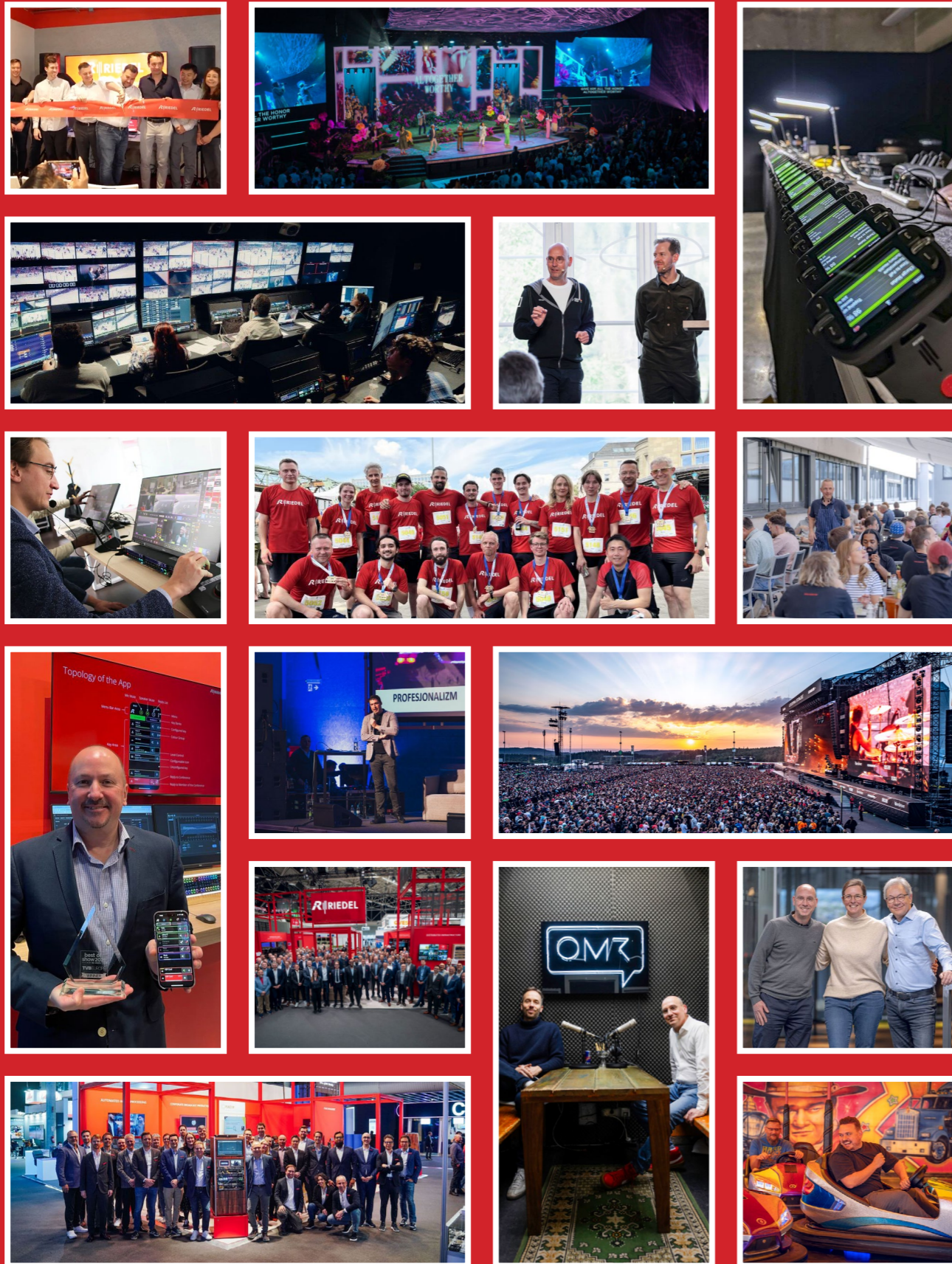
ARCHIVING

SimplyLive, along with the boost in connectivity, has also allowed Racing Victoria to modernise archiving for its stewards. Previously, review footage from a track would be handled by the TRP van on-site for that particular race meeting causing delays in access.



PROJECT PICTURES

YOUR DAILY UPDATE



SEE IT. LOVE IT. REPLAY IT.



RiMotion Replay

▶ **REPLAY FOR EVERYBODY, EVERYWHERE.**

SimplyLive RiMotion is an easy-to-install replay solution that can be implemented almost instantly in broadcast environments of any scale. It streamlines traditional and modern workflows and provides real-time performance, even when working remotely.

- Intuitive touchscreen UI
- Dedicated Remote Controller
- Compact 1RU or 2RU server

Available in seven cost-effective bundles

RiMotion R6, R8, R10, and R12 with 6 to 12 HD channels
 RiMotion R84 with up to 4 UHD SDR / 8 HD HDR channels
NEW! RiMotion R16 - 16 HD channels, scalable for additional users
NEW! RiMotion R168 - 16 HD channels, HDR option, up to 8 UHD channels

