



## Solutions for Theaters



## CUSTOM REQUIREMENTS CALL FOR CUSTOM SOLUTIONS



Riedel Communications is a leading provider of intercom systems and real-time media networks for complex venues around the world. Among the most demanding environments for clear communications and high-quality signal distribution are theaters and concert halls. Systems in these ever-changing production settings require flexibility, reliability, and scalability – qualities that have been the trademarks of Riedel solutions for decades.

Whether network-based or open platform transport, digital matrix or partyline intercoms, digital audio networks, radio solutions, or fiber-based media networks – Riedel's range of products is ready for the requirements of any event venue or theater and offers individual solutions of the highest reliability. Radios, intercoms, instruments, mixing consoles, lights, stage management systems, audio distribution, video cameras, projectors, monitors, and computers can all be linked, routed, and managed through a single, intelligent real-time signal network. Riedel offers transparent, flexible, and powerful systems that will greatly reduce your installation and maintenance costs.

---

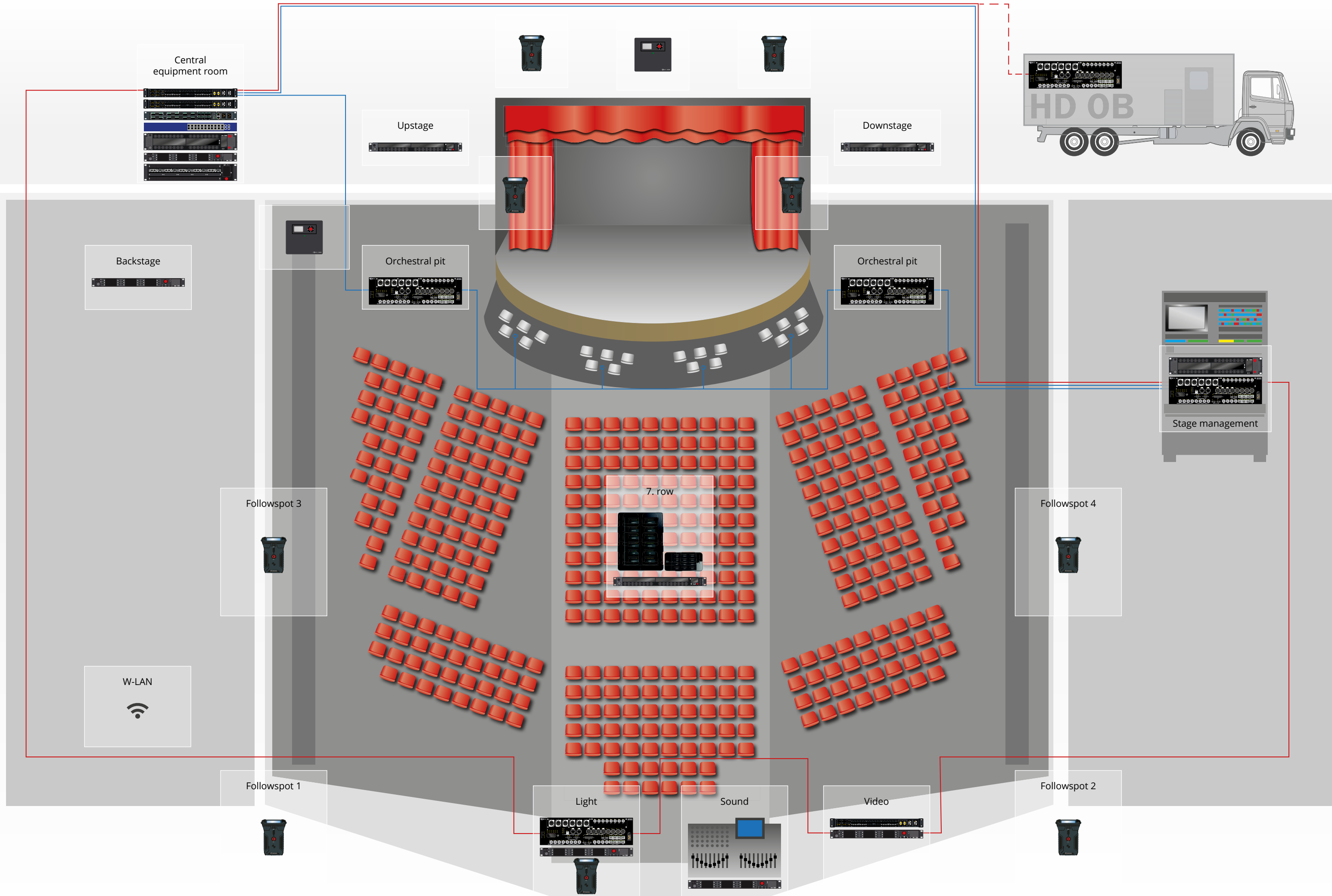
**“The scalability of Riedel solutions is particularly important to us. It allows us to remain flexible in the long term, and to plan out future-proof and cost-effective systems that meet all production requirements.”**

Karlheinz Fohlert, Head of AV, Theater Ulm

---

No matter how complex your installation may be, with Riedel solutions for theater and stage, your infrastructure can grow with your requirements. Our scalable and versatile systems offer unparalleled flexibility in setup and operation.

Do you need additional support for intercom or signal distribution? No problem! Just add one of many Riedel interfaces – whether as a permanent system expansion or a temporary rental solution – and you are ready to go on the spot!



Central equipment room

Upstage

Downstage

Backstage

Orchestral pit

Orchestral pit

Followspot 3

Followspot 4

W-LAN

Followspot 1

Followspot 2

7. row

Light

Sound

Video

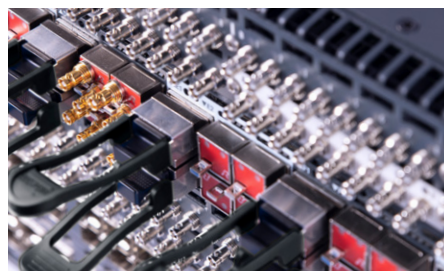
Stage management

HD 0B

# PRODUCT LINES

## MEDIORNET - THE REAL-TIME MEDIA NETWORK

- Unified network infrastructure for broadcast and entertainment
- Integration of all video, audio, data and communication signals
- Distributed routing, processing and multiviewing capabilities for SDI/TDM, hybrid or IP environments
- Intuitive real-time configuration



## ARTIST - THE DIGITAL MATRIX INTERCOM

- Distributed masterless system architecture for reduced wiring and installation costs
- Up to 1,024 x 1,024 non-blocking ports per system
- Seamless integration of VoIP SIP PABX and mobile HF radio (conventional and TETRA)
- Easy and intuitive programming for reduced training and service
- Future-proof – scalable and expandable



## BOLERO - THE WIRELESS INTERCOM

- Up to 10 beltacks per antenna; 100 antenna, 250 beltack system capacity
- High-clarity voice codec, ADR technology for multipath mitigation
- 6-channel beltack plus dedicated REPLY button
- Decentralized AES67 IP networked antennas
- Seamless integration into Riedel's Artist intercom matrix
- Two standalone network modes: Standalone Link & Standalone 2110 (AES67)



## SMARTPANEL - THE MULTIFUNCTIONAL USER INTERFACE

- Multiple full-color multitouch displays, innovative hybrid-lever keys
- Easy adaptability to various workflows
- Ability to leverage apps for multifunctionality:  
Intercom App, Control Panel App, Audio Monitoring App



# MANAGED TECHNOLOGY



**Intercom & Professional Radio Solutions**



**Media Network Solutions**



**RF Camera Solutions**



**CCTV Solutions**



**Access Control & Accreditation Solutions**



Riedel Communications GmbH & Co. KG  
Uellendahler Str. 353 | 42109 Wuppertal | Germany  
Phone +49 (0) 202 292-90 | [info@riedel.net](mailto:info@riedel.net) | [www.riedel.net](http://www.riedel.net)

#02/2024